

# What does HVAC equipment have to do with Earthquakes or Special Seismic Compliance?



turn to the experts™

Hospitals, schools, governments, emergency shelters, public places, etc. across the country are being required to comply with special seismic requirements. This seismic requirement includes the equipment in the building, not just the structure to achieve special seismic certification.

## WHAT CHANGED?

Previously, manufacturers would provide calculations as proof that equipment would maintain operation after a seismic event. Now, equipment must be tested on a "shaker table" in a lab.

## WHAT AGENCY OR CODE REGULATES THIS TESTING?

ICC Evaluation Service, Inc a non-profit organization has developed a test plan know as AC156 – Acceptance Criteria for Special Seismic Qualification by Shaker Table Testing of Nonstructural Components & System which is acceptable to IBC, UBC and other local building code governing agencies.

## SEISMICOMPLIANT\*

\*Meets IBC 2006, ASCE-7-05, CBC 2007 and OSHPD seismic requirements.



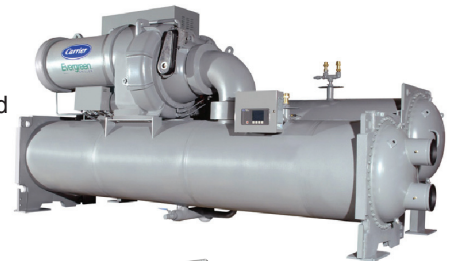
30XW Water-Cooled Chiller  
(OSP-0034-10)



30RB Air-Cooled Chiller (OSP-0135-10)



30HX Water-Cooled Chiller  
(OSP-0161-10)



19XR(V) Water-Cooled  
Centrifugal Chiller  
(OSP-0026-10)

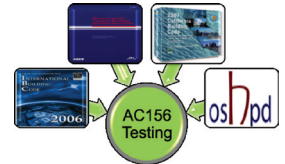


23XRV Water-Cooled  
Centrifugal Chiller (OSP-0135-10)

Carrier's water-cooled chillers (19XR, 23XRV, 30XW and 30HX) and air-cooled chillers (30RB) product families are special seismic compliant.

## FEATURES –

- Products tested on a shaker table, simulating seismic effects as per AC-156 requirements as required by ICC Evaluation Service, Inc.
- Certificate of Compliance or OSHPD pre-approval documentations are available at the time of specification and submittals.
- Seismic kit is provided along with the equipment for ground or roof installation.
- Consultant and Owner know that the equipment was certified by an independent third party for seismic events.



## HOW CAN I GUARANTEE THAT THE EQUIPMENT MEETS AC-156 SEISMIC QUALIFICATION?

### YOU CAN SPECIFY THE FOLLOWING:

- Manufacturer shall provide pre-approved documentation from OSHPD.
- Manufacturer shall provide seismic certificate of compliance.
- Manufacturer shall have performed seismic testing (shake table test) of specified model family as per ICC-ES AC-156 by recognized/accredited third party approving agency.

**For your next project requiring special seismic certification, contact your local Carrier sales engineer for more information.**