



Turn to the Experts.™

i-Vu Trending

It's Automatic

i-Vu's automatic trending capabilities mean that a history of your equipment's operation is being saved without any special setup. Trends can be easily modified to sample at different time intervals or on change of value instead. Trends may also be saved historically for user-defined periods of time such as 7 days or 2 months.

Viewing Trends

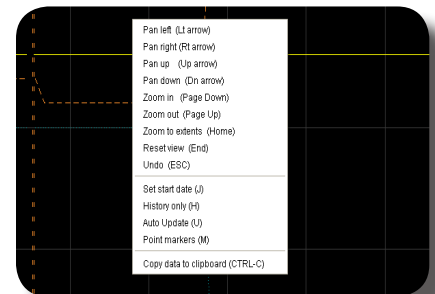
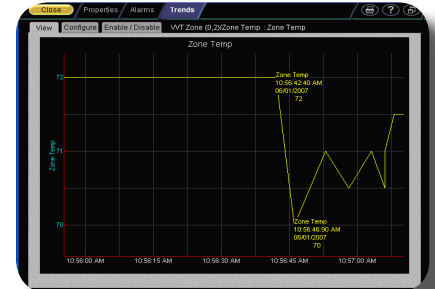
Viewing trends is effortless with i-Vu. Simply point and click to a piece of equipment in the navigation tree, and you will be presented with a comprehensive list of trend points that are already enabled. Pick any point to view the trend graph. While viewing the trend graph, there are many tools at your disposal:

- Use arrow keys to pan the trend graph in different directions.
- Draw a rectangle around a specific area to zoom-in on that data.
- Use the Page Down key to zoom-out on specific trend data.
- Ctrl+click a trend sample on the graph to view the point name, the time and date when the sample was read, and the exact point value.
- Enter a specific start date to jump to the trend graph for that date.
- Show point markers for each data point in the graph.
- Copy the trend graph data that is being displayed on the screen and paste it into Excel.

Creating Comparison Trend Graphs

You can also graph multiple trend points simultaneously to help monitor and troubleshoot your system. A comparison trend graph can display up to four graphs on the same page. Each graph can display up to 4 similar points – 4 binary points or 4 analog points.

With i-Vu's extensive trend capabilities, troubleshooting your Carrier system has never been easier!



	A	B	C
1			
2		Time	Zone Temp
3		6/1/07 10:56 AM	72
4		6/1/07 10:56 AM	70
5		6/1/07 10:56 AM	71
6		6/1/07 10:56 AM	70.5
7		6/1/07 10:57 AM	71
8		6/1/07 10:57 AM	70.5
9		6/1/07 10:57 AM	71
10		6/1/07 10:57 AM	71.5

