



Turn to the Experts.™

# UC Open XP

Part Number: OPN-UCXP

The UC Open XP Controller provides auxiliary building control to interface with lighting, fans, pumps, and other HVAC equipment. The UC Open XP's pre-engineered algorithms provide simple building integration for commercial applications with 24 I/O point capability. The UC Open XP also provides support for 24 additional I/O points through the use of the UC Open XP IO Expander. When combined, these controllers can support up to 48 total I/O points for even greater flexibility. The UC Open XP also features native BACnet communications and plug-and-play connectivity to the Carrier i-Vu Open Control System. The Carrier i-Vu Open Control System combines state-of-the-art Carrier equipment, plug-and-play controllers, and the powerful, web-based i-Vu user interface to form a cohesive, intuitive, and fully-integrated BACnet Building Automation System.

## Application Features

- ‡ Comprehensive library of pre-engineered algorithms available through the ApplicationBuilder Tool
- ‡ Supported functions include: Constant Volume (CV) Cooling and Heating Control, Dehumidification, CV Mixed Air Damper Optimization, Fan Control, Pump Control, Lighting Control, Indoor Air Quality, Generic PID Control, Time Scheduling with/without Override, Analog Temperature Control, Discrete Interlock, Discrete Staging Control, Permissive Interlock, Set Point Reset, Optimal Start/Stop, WSHP Loop Control
- ‡ Supports Carrier SPT room sensors, which allow for local setpoint adjustment and local overrides

## System Benefits

- ‡ Integrated Carrier linkage algorithm for plug-and-play integration with Carrier systems
- ‡ Fully plug-and-play with the Carrier i-Vu Open Control System
- ‡ Supports demand limiting for maximum energy savings

## Hardware Features

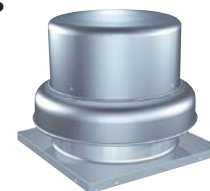
- ‡ Real time-clock keeps time in the event of power failure
- ‡ UC Open XP supports up to 24 I/O points; add UC Open XP IO Expander to support up to 48 I/O points
- ‡ Native BACnet MS/TP communications



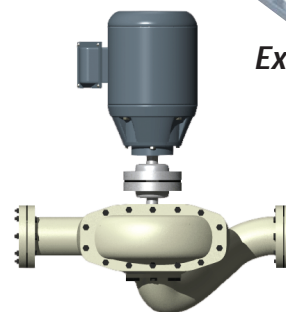
*Boilers*



*Lighting*



*Exhaust Fans*



*Water Loop Control*



*Electric Meters*

