



# 19XR Pumpout Unit 30HW Reciprocating Liquid Chillers Mobility Package Accessory

## Installation Instructions

Part No. 30HW900008

### USAGE

This package may be used on the following units:

19XR04026501  
19XR04026502  
19XR04026503  
30HWA,HWB018-040  
30HWC,HWS018-040

### INTRODUCTION

Install this package after bringing unit into the building. For 30HWA,HWB units, install this package before removing the shipping skid. For 30HWC,HWS units and 19XR pumpout unit, the unit must be raised off from the shipping skid by approximately 6 inches. After the accessory mobility package is installed, the unit can be moved to its final location.

#### Package Contents (Each)\*

QUANTITY	ITEM
4	Wheel Assemblies (includes wheel, nut, and washer)
4	Spacers

\*The 30HWC,HWS units require 2 accessory mobility packages.

### INSTALLATION

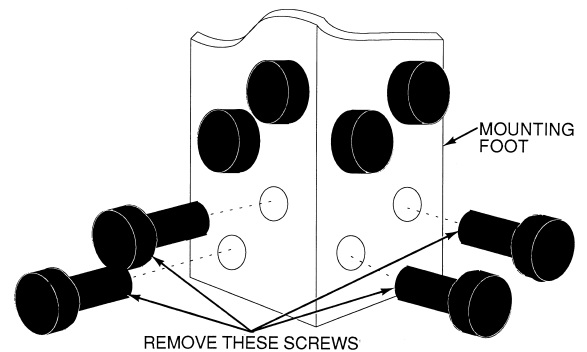
#### 30HWA,HWB Units

**IMPORTANT: LEAVE THE UNIT ON THE SHIPPING SKID** until installation of the wheels is completed.

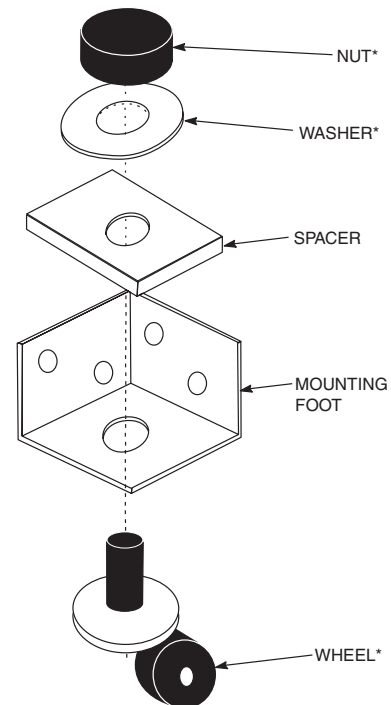
- EXAMINE PACKAGE CONTENTS** — Check to be sure there are 4 wheel assemblies and 4 spacers in the carton. Notify your Carrier representative if there are pieces missing or if the accessory is damaged.
- REMOVE MOUNTING FOOT** — The 30HWA and HWB units have a mounting foot on each corner upright post for the purpose of mounting the wheel assemblies. Remove the 4 bottom self-threading screws from the corner upright and remove the mounting foot. See Fig. 1. Save screws and mounting feet to use in Step 4.
- MOUNT WHEEL ASSEMBLIES TO MOUNTING FEET** — Mount one wheel assembly and spacer to each of the mounting feet as shown in Fig. 2. Tighten the nut so that it holds the wheel assembly securely once the assembly is mounted on the unit. A minimum torque of 20 ft-lb is recommended.
- REATTACH MOUNTING FEET AND WHEEL ASSEMBLIES TO UNIT CORNER UPRIGHTS** — Using the screws removed in Step 2, reattach the mounting feet (with wheel assemblies) back onto the unit corner uprights and tighten screws.

**IMPORTANT:** Be careful not to overtighten the self-threading screws and strip the threads. If overtightening occurs and the threads are stripped, install a field-supplied  $\frac{3}{8}$ -in. lockwasher and nut onto the screw to hold it in place.

Once all 4 wheel assemblies have been mounted in place and tightened, remove the unit from the shipping skid and roll it to the desired location.



**Fig. 1 — Removing Mounting Foot, 30HWA, 30HWB Units**



\*Part of wheel assembly.

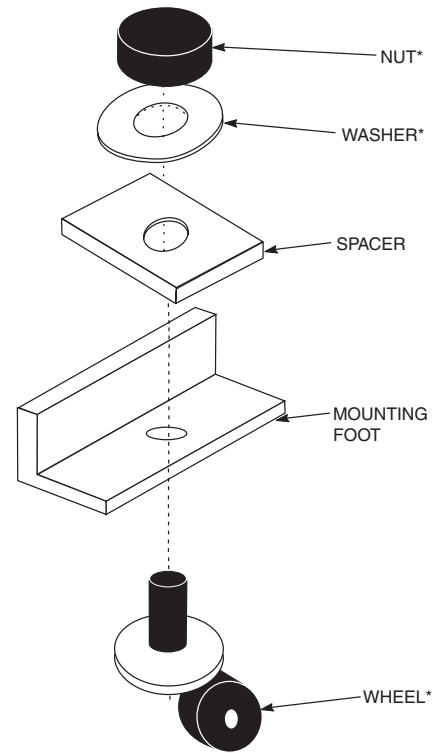
**Fig. 2 — Mounting Wheel Assembly and Spacer to Mounting Foot, 30HWA,HWB Units**

Manufacturer reserves the right to discontinue, or change at any time, specifications or designs without notice and without incurring obligations.

## 30HWC,HWS Units

**IMPORTANT:** The 30HWC,HWS units require 2 accessory mobility packages.

1. **EXAMINE PACKAGE CONTENTS** — Check to be sure there are 4 wheel assemblies and 4 spacers in each of the 2 mobility package cartons. Notify your Carrier representative if there are pieces missing or if either accessory package is damaged.
2. **REMOVE LAG BOLTS** — Remove the lag bolts from the shipping skid and discard the bolts. There are 8 lag bolts holding the unit to the skid.
3. **JACK UP THE UNIT** — Jack up the unit to a height of approximately 6 in. above the shipping skid and block in place. Be sure to block the unit securely so that it cannot fall during installation of the mobility packages.
4. **MOUNT WHEEL ASSEMBLIES TO MOUNTING FEET** — Mount one wheel assembly and spacer to each of the mounting feet as shown in Fig. 3. Tighten the nut so that it holds the wheel assembly securely once the assembly is mounted on the unit. A minimum torque of 20 ft-lb is recommended.
5. **PLACE UNIT ON THE FLOOR** — Remove the shipping skid from under the unit, remove the blocks, and carefully place unit back onto the floor. The unit is now ready to roll to the desired location.

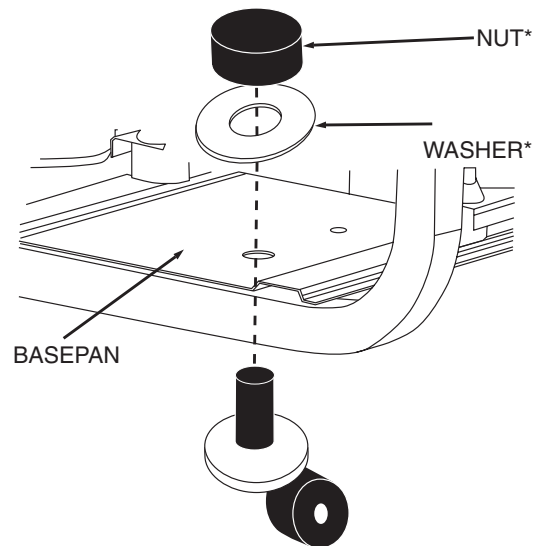


\*Part of wheel assembly.

**Fig. 3 — Mounting Wheel Assembly and Spacer to Mounting Foot, 30HWC,HWS Units**

## 19XR Pumpout Units

1. **EXAMINE PACKAGE CONTENTS** — Check to be sure there are 4 wheel assemblies in the carton. Spacers are included in the carton but are not used. Notify your Carrier representative if there are pieces missing or if the accessory is damaged.
2. **REMOVE LAG BOLTS** — Remove 4 lag bolts attaching the pumpout unit to the skid and discard the bolts.
3. **JACK UP THE UNIT** — Jack up the unit to a height of approximately 6 in. above the shipping skid and block in place. Be sure to block the unit securely so that it cannot fall during installation of the mobility package.
4. **MOUNT WHEEL ASSEMBLIES TO PUMPOUT UNIT** — Mount one wheel assembly to each of the mounting holes per Fig. 4. Use the same mounting holes from which the lag bolts were removed in Step 2. Tighten the nut so that it holds the wheel assembly securely once the assembly is mounted on the unit. A minimum torque of 20 ft-lb is recommended.
5. Discard spacers.
6. **PLACE UNIT ON THE FLOOR** — Remove the shipping skid from under the unit, remove the blocks, and carefully place unit back onto the floor. The unit is now ready to roll to the desired location.



\*Part of wheel assembly.

**Fig. 4 — Mounting Wheel Assembly to Pumpout Assembly BasePan**