

**40QAQ060 with 38QRR060  
13 SEER Underceiling System  
Performance™ Series Heat Pump  
with Puron® Refrigerant**



Turn to the Experts.™

# Submittal Data

Job Data: \_\_\_\_\_ Location: \_\_\_\_\_

Buyer: \_\_\_\_\_ Buyer P.O.# \_\_\_\_\_ Carrier # \_\_\_\_\_

Unit Number: \_\_\_\_\_ Model Number: \_\_\_\_\_

Performance Data Certified By: \_\_\_\_\_ Date: \_\_\_\_\_



40QAQ



38QRR



## FEATURES

- Mounting bracket
- Electro mechanical controls
- Built-in electric heat
- Auto restart after power failure
- User selectable fan speeds plus auto
- Cleanable filters
- Motorized louvers
- Accessory wired user interfaces
- Capable of connecting to an Energy Management system
- Up to 200 ft (61 m) total piping (accessories required)
- Accessory fresh air intake kit
- Low ambient operation down to -20°F (28.9°C) w/accessory
- Accessory condensate pump
- Power ventilation accessory
- Limited Warranty: 1-year parts / 5-year compressor
- Optional extended parts and labor warranty

### Indoor Unit - 40QAQ / Outdoor Unit - 38QRR

(Unless otherwise indicated, data applies to both indoor and outdoor models)

<b>SYSTEM SIZE</b> .....	060
<b>REFRIGERANT</b> .....	R-410A
<b>PERFORMANCE</b>	
Cooling Nominal Capacity (Btuh) .....	60,000
Heating Nominal Capacity (Btuh) .....	60,000
SEER .....	13
HSPF .....	7.7
Moisture Removal Rate(Pints/hr) .....	14.5
Airflow (Low/Med/High) .....	1040 / 1220 / 1600
<b>SOUND PRESSURE (dBA)</b>	
Indoor (Low/Med/High) .....	54.8 / 57.8 / 59.1
Outdoor .....	61
<b>SOUND POWER (dBA)</b>	
Indoor (Low/Med/High) .....	65.8 / 68.8 / 70.1
Outdoor .....	72
<b>PERFORMANCE AT ACTUAL CONDITIONS:</b>	
Attached <input type="checkbox"/>	Not Attached <input type="checkbox"/>

## ELECTRICAL

System Voltage .....	208/230-1; 208/230-3; 460-3 V
MCA	
Indoor .....	34.5; 21.5; 10.6
Outdoor (208/230-1; 208/230-3; 460-3) .....	28.7
MOCP	
Indoor .....	30
Outdoor (208/230-1; 208/230-3; 460-3) .....	60; 35; 15
Fan Motor (Indoor) (FLA) .....	2.6
Electric Heat (kW) .....	5.00

## CONTROLS

Control Remote .....	Wired
Control Voltage .....	24v
Control Wiring (0-75 ft.) .....	18 AWG
Control Wiring (75-200 ft.) .....	16 AWG

## REFRIGERANT LINES (Insulate vapor line)

Liquid Line (in.) OD .....	3/8
Vapor Line (in.) OD .....	7/8
Metering/Control Device .....	Accurater at outdoor unit

\* Refer to NEC and local codes for compliance requirements.

<b>Thermostat Slim Line 7-day Programmable:</b>	Required <input type="checkbox"/>	Not Required <input type="checkbox"/>
<b>Flat Stat 7-day Programmable:</b>	Required <input type="checkbox"/>	Not Required <input type="checkbox"/>
<b>Thermostat Super T2 5-1-1 Commercial:</b>	Required <input type="checkbox"/>	Not Required <input type="checkbox"/>
<b>Remote Room Sensor Kit:</b>	Required <input type="checkbox"/>	Not Required <input type="checkbox"/>
<b>Condensate Pump:</b>	Required <input type="checkbox"/>	Not Required <input type="checkbox"/>

<b>Fresh Air Intake Kit:</b>	Required <input type="checkbox"/>	Not Required <input type="checkbox"/>
<b>Low Ambient Kit:</b>	Required <input type="checkbox"/>	Not Required <input type="checkbox"/>
<b>Isolation Relay:</b>	Required <input type="checkbox"/>	Not Required <input type="checkbox"/>
<b>Crankcase Heater:</b>	Required <input type="checkbox"/>	Not Required <input type="checkbox"/>
<b>Wind Baffle:</b>	Required <input type="checkbox"/>	Not Required <input type="checkbox"/>

### UNIT DIMENSIONS – INDOOR MODEL

UNIT SIZE	INDOOR MODEL	WIDTH (IN.) A	HEIGHT (IN.) B	DEPTH (IN.) C	WEIGHT (LB)
60	40QAQ060---3	92	9-15/16	23-1/8	181

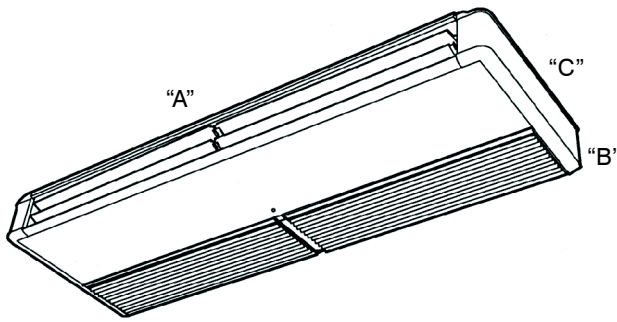


Fig. 1 – 40QAQ Dimensions

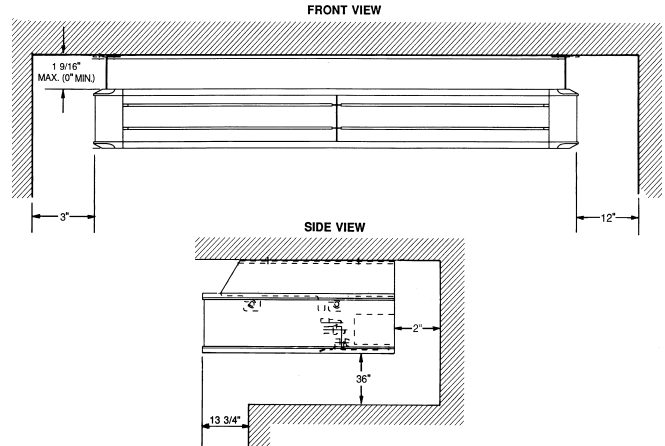


Fig. 2 – 40QAQ Clearance

### UNIT DIMENSIONS – OUTDOOR MODEL

UNIT SIZE	OUTDOOR MODEL	WIDTH (IN.) A	HEIGHT (IN.) B	DEPTH (IN.) C	WEIGHT (LB)
060	38QRR060---3	44.6	43.2	17.1	306
060	38QRR060---5	44.6	43.2	17.1	306
060	38QRR060---6	44.6	43.2	17.1	306

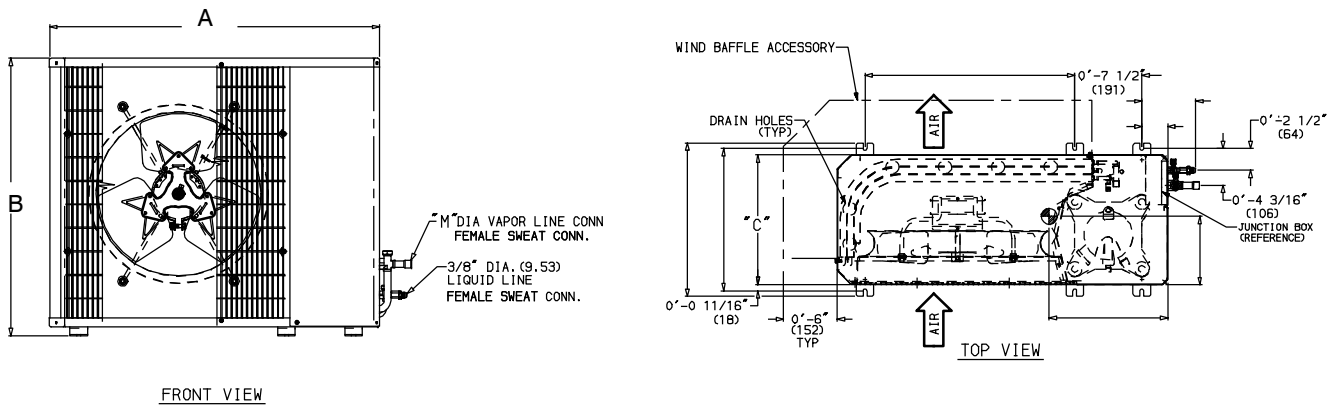
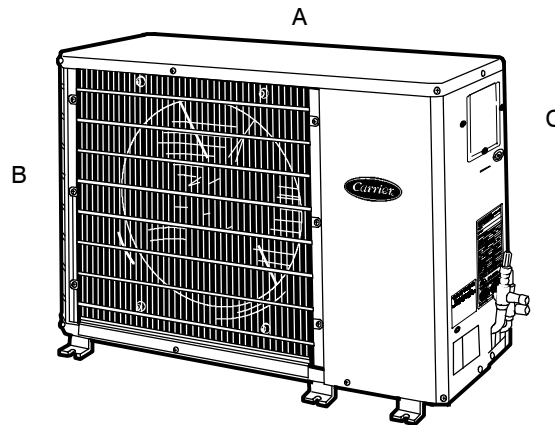


Fig. 3 – 38QRR DIMENSIONS