

CODE



Carrier

A United Technologies Company

THIS DOCUMENT IS THE PROPERTY OF CARRIER CORPORATION AND IS DELIVERED UPON THE EXPRESS CONDITION THAT THE CONTENTS WILL NOT BE DISCLOSED OR USED WITHOUT CARRIER CORPORATION'S WRITTEN CONSENT

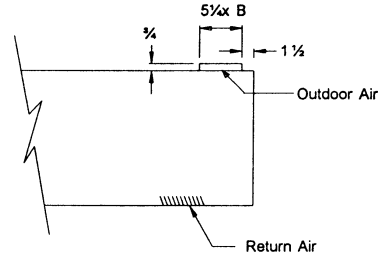
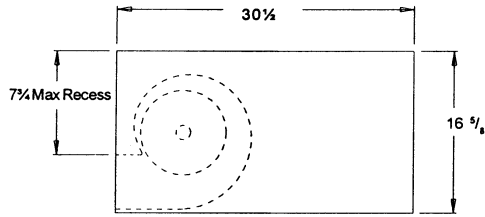
SUBMISSION OF THESE DRAWINGS OR DOCUMENTS DOES NOT CONSTITUTE PART PERFORMANCE OR ACCEPTANCE OF CONTRACT

**40UH-HORIZONTAL UNIT
VENTILATOR DISCHARGE
AND INLET
AIR ARRANGEMENTS**

40UH

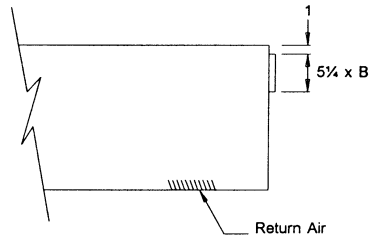
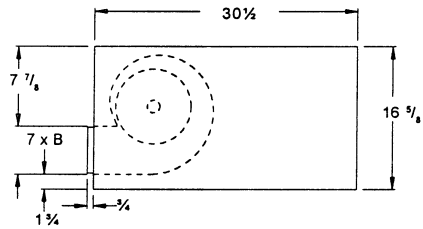
CATALOG #

**Front Bar Stock
Discharge Air
Grille with Side
Deflection Vanes**



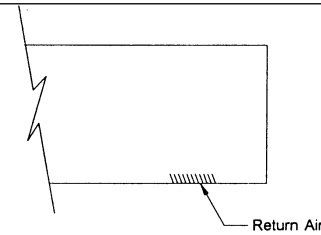
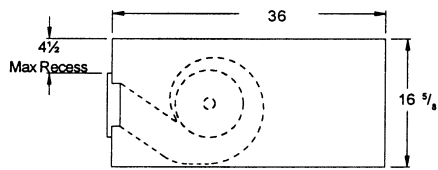
**Bottom Return
Air Grille Top
Outdoor Air
Duct Collar**

**Front Discharge
Air Duct Collar
located 1 3/4" up from
Bottom of Unit**



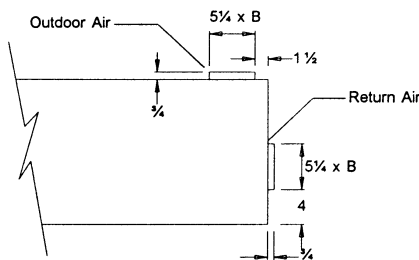
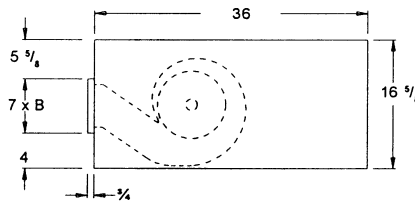
**Bottom Return
Air Grille Rear
Outdoor Air
Duct Collar**

**Front Discharge
with either Double
Deflection or
Bar Stock with
Adjustable Side
Deflection**



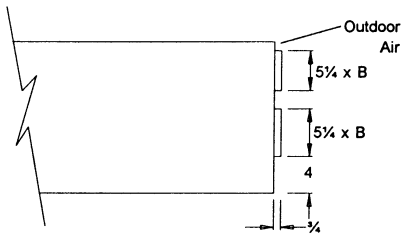
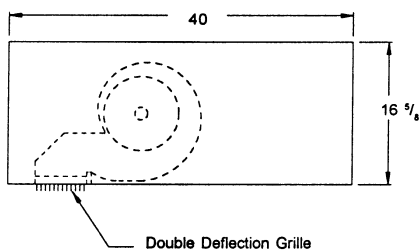
**Bottom Return
Air Grille No
Outdoor Air**

**Front Discharge
Air Duct Collar
Located 4" up from
Bottom of Unit**



**Rear Return Air
Duct Collar Top
Outdoor Air
Duct Collar**

**Bottom Double
Deflection
Discharge Air
Grille**

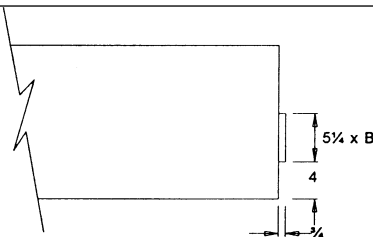


**Rear Return Air
Duct Collar
Rear Outdoor
Air Duct Collar**

UNIT SERIES	075	100	125	150	200
DIM. " B"	36	48	60	72	72

NOTE:

- For all full or partial recessed applications both the inlet and the outlet air physical locations must be carefully examined. This is required for each individual location and in combination with each other to ensure specific installation compatibility.
- Verification of adequate clearance to open and remove bottom access end panels for routine maintenance is extremely important.



**Rear Return Air
Duct Collar No
Outdoor Air**

PRODUCT INFORMATION IS SUBJECT TO CHANGE WITHOUT NOTICE.

03/27/01

JOB NAME	JOB NUMBER	LOCATION	DRAWING NUMBER
BUYER	BUYER #	REVISION	SHEET

40UH-202-2