

CODE



Carrier

A United Technologies Company

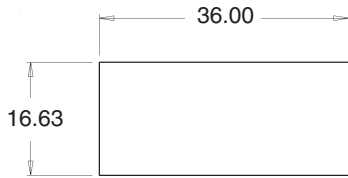
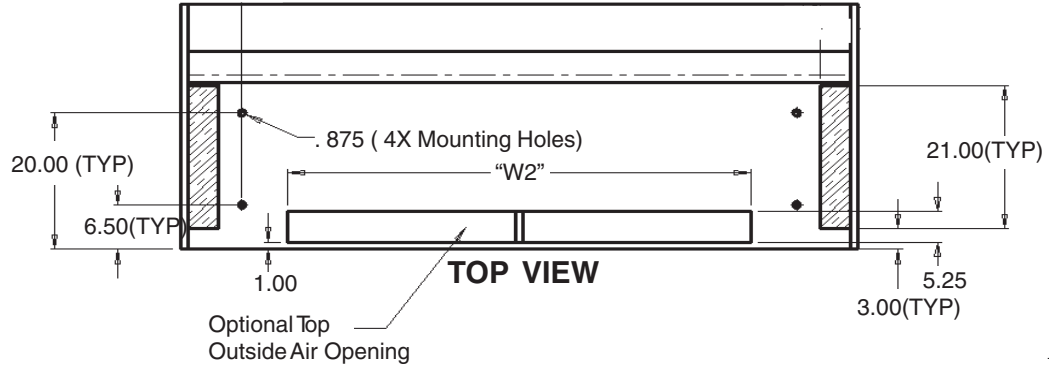
THIS DOCUMENT IS THE PROPERTY OF CARRIER CORPORATION AND IS DELIVERED UPON THE EXPRESS CONDITION THAT THE CONTENTS WILL NOT BE DISCLOSED OR USED WITHOUT CARRIER CORPORATION'S WRITTEN CONSENT

SUBMISSION OF THESE DRAWINGS OR DOCUMENTS DOES NOT CONSTITUTE PART PERFORMANCE OR ACCEPTANCE OF CONTRACT

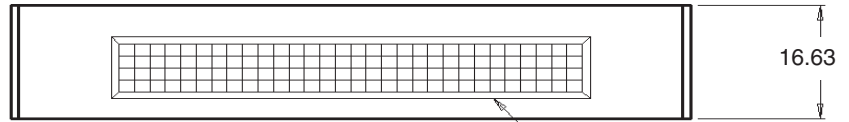
40UH HORIZONTAL UNIT VENTILATOR WITH PLENUM DISCHARGE ARRANGEMENT
SIZES 075-200

40UH

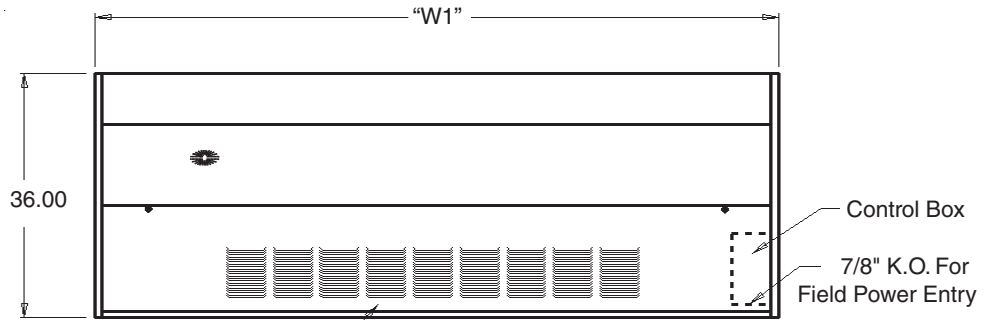
CATALOG #



RIGHT SIDE VIEW

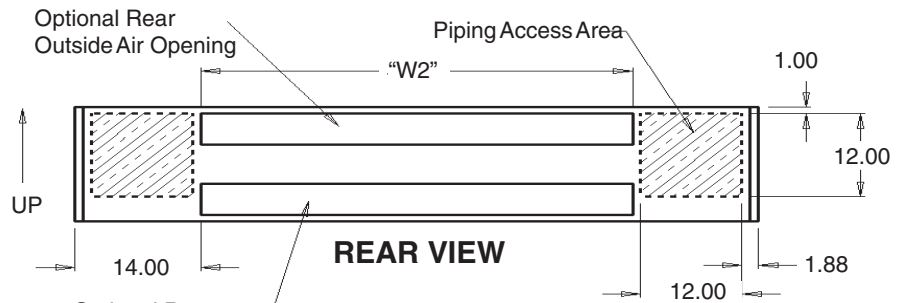


FRONT VIEW



BOTTOM VIEW

Optional Return Air Louvered Panel Shown



REAR VIEW

| MODEL NO. | "W1" | "W2" | MAX WEIGHT |
|-----------|------|------|------------|
| 40UH075 | 64 | 36 | 380 LBS. |
| 40UH100 | 76 | 48 | 455 LBS. |
| 40UH125 | 88 | 60 | 525 LBS. |
| 40UH150 | 100 | 72 | 600 LBS. |
| 40UH200 | 100 | 72 | 640 LBS. |

NOTE:

1. Drawing refers to Design "A" units.
2. All dimensions in inches.
3. W1 dimension includes end panels.
4. Motor and electrical power input box on right side of unit. Box includes Fan Speed/Off Switch and 7/8" knockout on bottom for power wiring.

PRODUCT INFORMATION IS SUBJECT TO CHANGE WITHOUT NOTICE.

04/16/04

| | | | |
|----------|------------|-------------------|-------------------|
| JOB NAME | JOB NUMBER | LOCATION | DRAWING NUMBER |
| BUYER | BUYER # | REVISION A | 40UH-202-4 |
| | | SHEET | |