

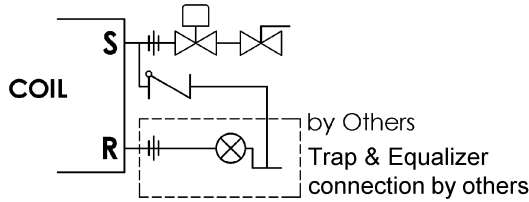


Water valves can be either 2 way or 3 way. Hot water valves must be piped normally open to the coil. Chilled water valves must be piped normally closed to the coil. On 2 pipe heat/cool applications, the valves must be piped as though heating valves.

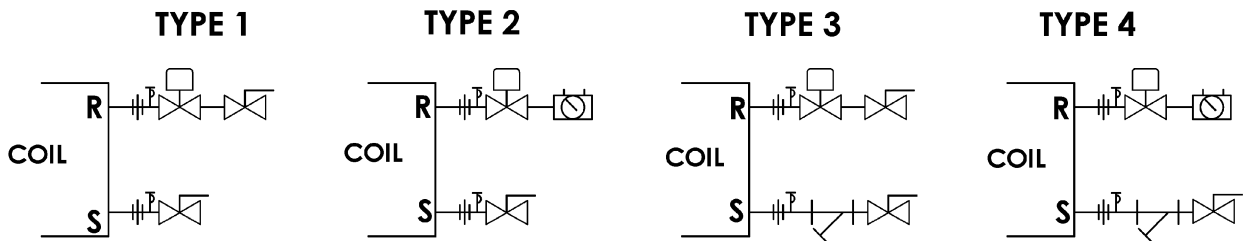
As standard, control valves are not piped, but are furnished and tested with Carrier control packages and shipped in the unit end compartment for field piping. See following for recommended piping.

All water coils contain vent and drain plugs as standard. Control valve by Carrier. All other components by others.

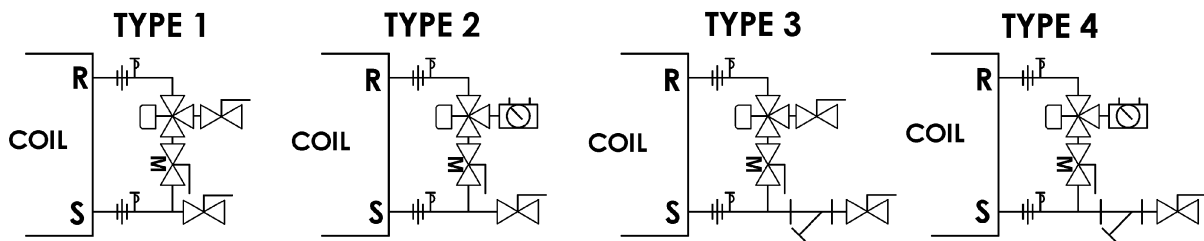
Steam - Valve Package Components



Two Way - Valve Package Components



Three Way - Valve Package Components



LEGEND

- BALL VALVE
- BALL VALVE w/MEMORY STOP
- CHECK VALVE
- CIRCUIT SETTER
- WYE STRAINER
- STEAM TRAP
- PT PORT
- UNION
- 3-WAY CONTROL VALVE
- 2-WAY CONTROL VALVE

PRODUCT INFORMATION IS SUBJECT TO CHANGE WITHOUT NOTICE.

06/14/04

JOB NAME	JOB NUMBER	LOCATION	DRAWING NUMBER
BUYER	BUYER #	REVISION A	40UV-202-8