

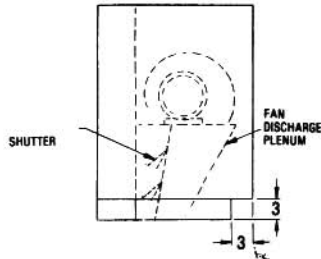
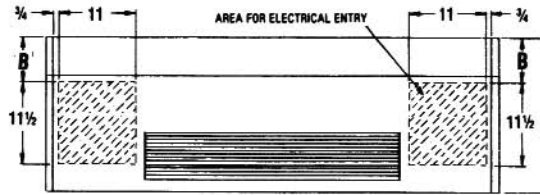


DIRECT DRIVE FAN MOTOR

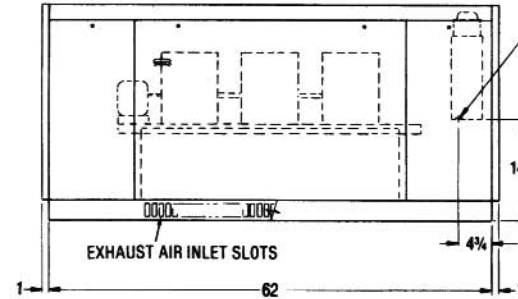
2 Fan Unit - 500 CFM
3 Fan Unit - 750 CFM

ALL DIMENSIONS IN INCHES

A-BACK DEPTH	A	B	C
3	19 $\frac{1}{4}$	4	14 $\frac{1}{4}$
5 $\frac{1}{4}$	21 $\frac{1}{4}$	6 $\frac{1}{4}$	17 $\frac{1}{4}$
11 $\frac{1}{4}$	28	12 $\frac{1}{4}$	23 $\frac{1}{4}$

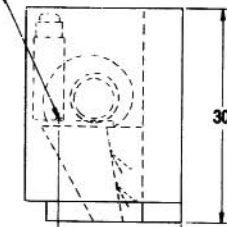


LEFT END VIEW WITH END PANEL

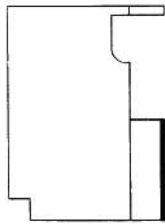


FRONT VIEW

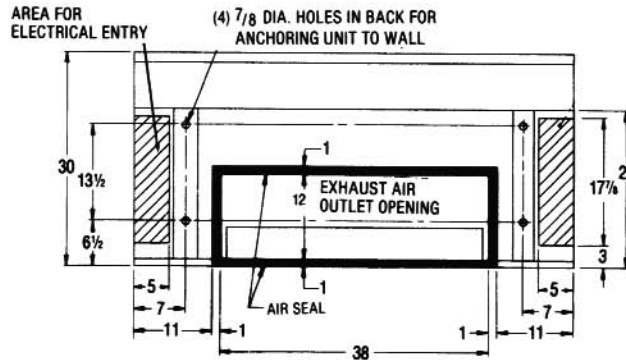
7/8 DIA. KNOCKOUT IN BOTTOM OF BOX FOR FIELD ELECTRICAL CONNECTION



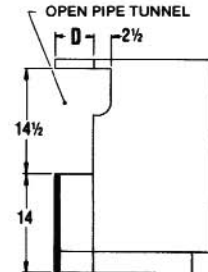
RIGHT END VIEW WITH END PANEL



RIGHT END VIEW WITHOUT END PANEL

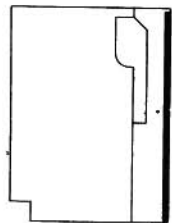


REAR VIEW (OPEN PIPE TUNNEL)

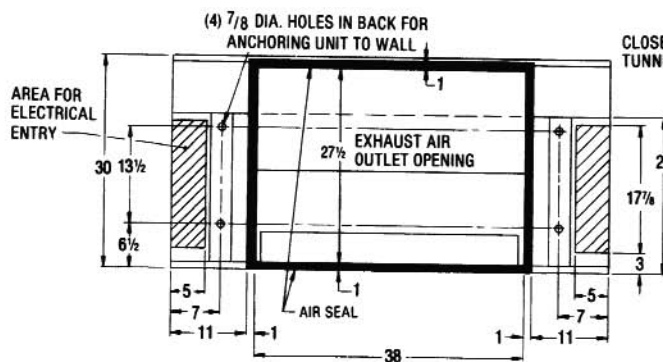


LEFT END VIEW WITHOUT END PANEL

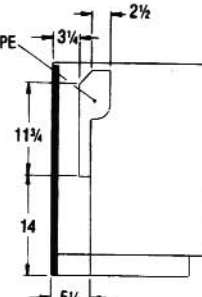
UNIT DEPTH	D
19 $\frac{1}{4}$	3
21 $\frac{1}{4}$	5 $\frac{1}{4}$



RIGHT END VIEW WITHOUT END PANEL



CLOSED PIPE TUNNEL



LEFT END VIEW WITHOUT END PANEL

PRODUCT INFORMATION IS SUBJECT TO CHANGE WITHOUT NOTICE.

04/16/04

JOB NAME	JOB NUMBER	LOCATION	DRAWING NUMBER
BUYER	BUYER #	REVISION	SHEET

40UV-212-7