

# Large Packaged Rooftop Units 12½ to 25 Tons Accessory Two-Position Damper

Cancels: IIK 542F-120-1

IIK 542J-150-7  
1/15/99

## Installation Instructions

Part No. CRTWOPOS005A00

### INSTALLATION

**General** — The two-position damper package (Fig. 1) contains:

- 1 — Damper blade
- 1 — Damper bracket
- 1 — Motor bracket
- 1 — Motor
- 1 — Motor support
- 1 — Blade linkage rod
- 1 — Blade linkage connector
- 2 — Flat 5/16-in. washers
- 1 — Speed nut
- 4 — #10-24 nuts
- 4 — #10 AB x ½-in. lg bolts
- 2 — #10-16 x ½-in. screws

Components not shown in Fig. 1:

- 1 — Transformer
- 2 — 104-in. wire leads
- 2 — 35-in. wire leads
- 4 — Wire nuts
- 1 — Star washer
- 2 — #8B x ½-in. lg screws
- 1 — 7/8 Snap bushing

### Procedure

1. Remove economizer hood and 25% outside air insulation assembly panel from base unit (Fig. 2 and 3).
2. On insulation side of assembly panel: using clearance holes as shown in Fig. 1, place damper bracket and motor bracket over screws holding 25% air damper blade. Place bracket alignment notches in line with assembly panel notches (see Fig. 4). Drill 4 holes through assembly panel as indicated in Fig. 4.

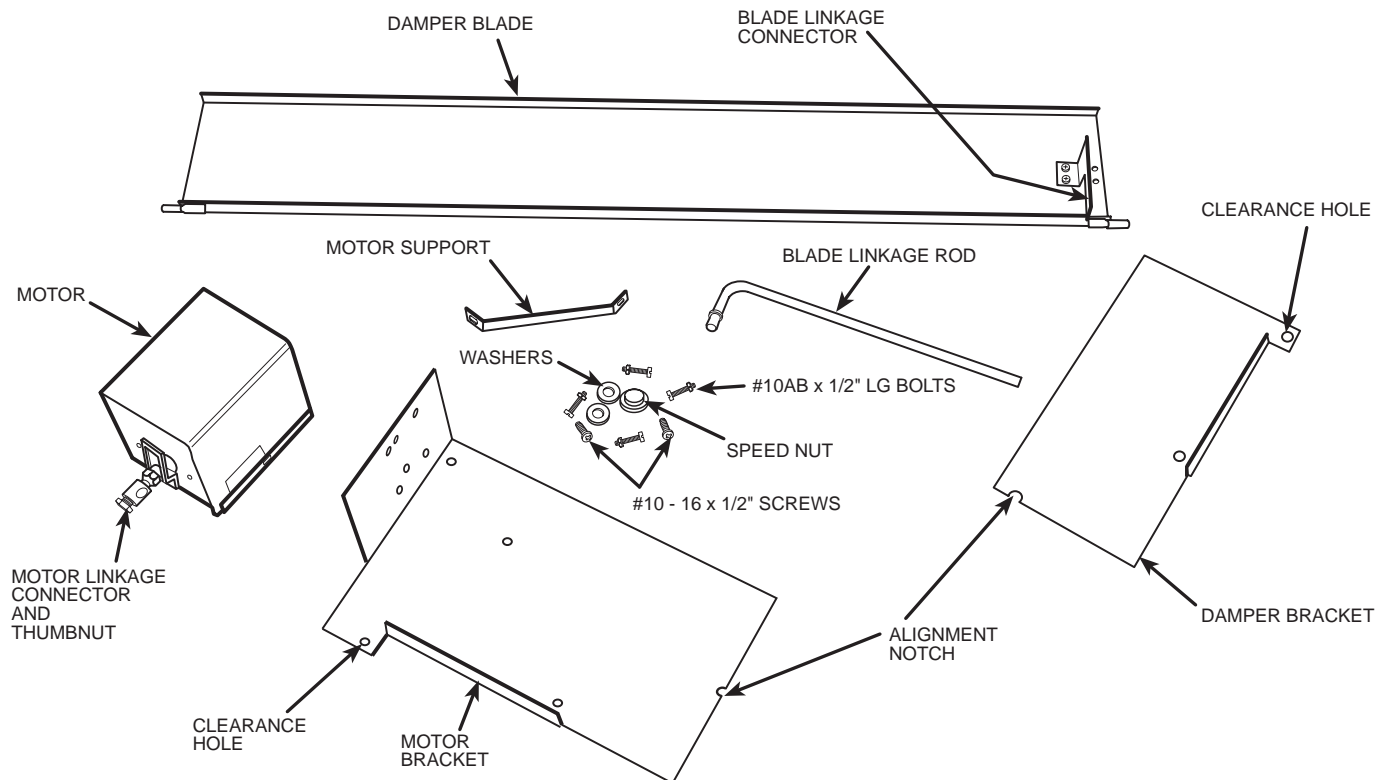
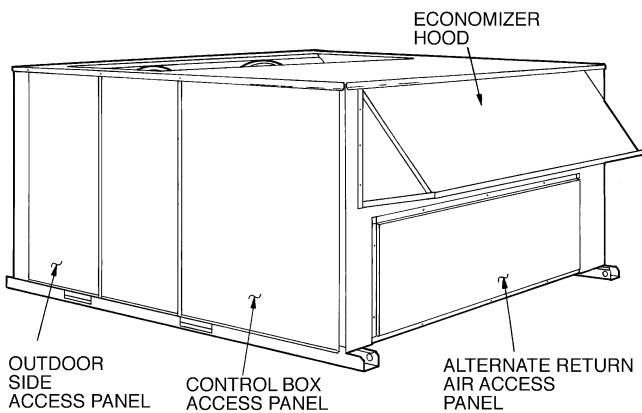


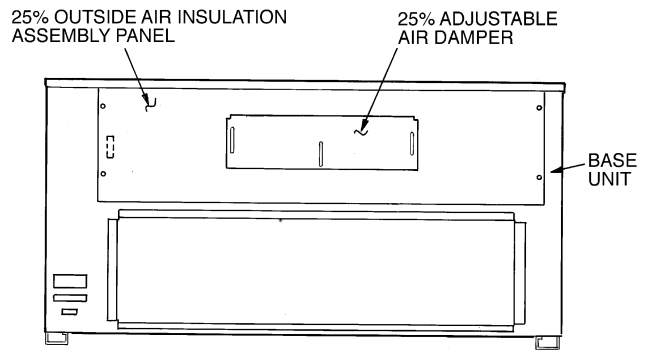
Fig. 1 — Package Contents

Manufacturer reserves the right to discontinue, or change at any time, specifications or designs without notice and without incurring obligations.

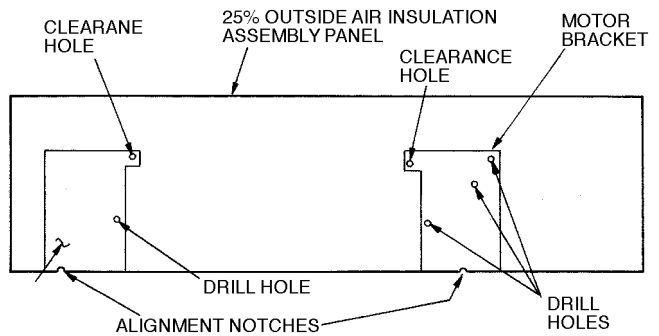
3. Using two #10-16 x 1/2-in. screws, assemble motor to motor bracket. Support must be attached as shown in Fig. 5 and motor linkage connector placed in horizontal position (Fig. 5).
4. Place damper and motor brackets in alignment with assembly panel as in Step 2, and install damper blade into brackets as shown in Fig. 6. Insert four #10 bolts through drill holes in assembly panel and brackets. Tighten with #10-24 nuts.
5. Referring to Fig. 6, insert blade linkage rod into blade linkage connector (using washers) and motor linkage connector. Tighten with speed nut and thumbnut respectively.
6. Adjust 25% air damper to desired setting.
7. Remove main control box access panel from base unit (Fig. 2).
8. Using star washer and two #8B x 1/2-in. long screws, mount transformer in main control box as shown in Fig. 7.
9. Remove knockout located in damper motor housing and knockouts in bottom panel of main control box (Fig. 7) and insulation panel below main control box. Install snap bushing beneath main control box.
10. Connect 35-in. long leads to 11 and 13 on indoor fan contactor (IFC) and to appropriate voltage on transformer primary. See Fig. 8. Cap unused leads on transformer primary with wire nuts.



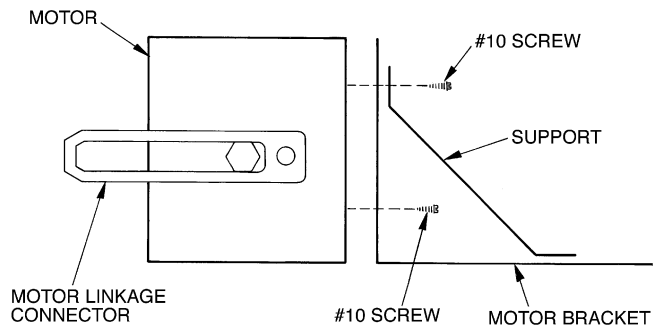
**Fig. 2 — Base Unit**



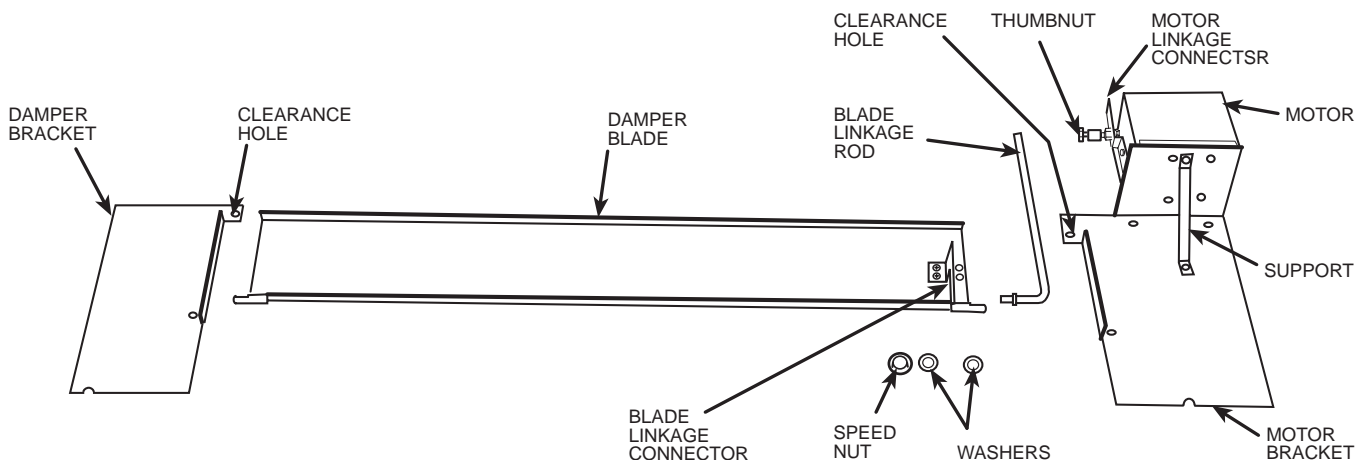
**Fig. 3 — 25% Outdoor Air Section Details**



**Fig. 4 — Drill Hole Location**

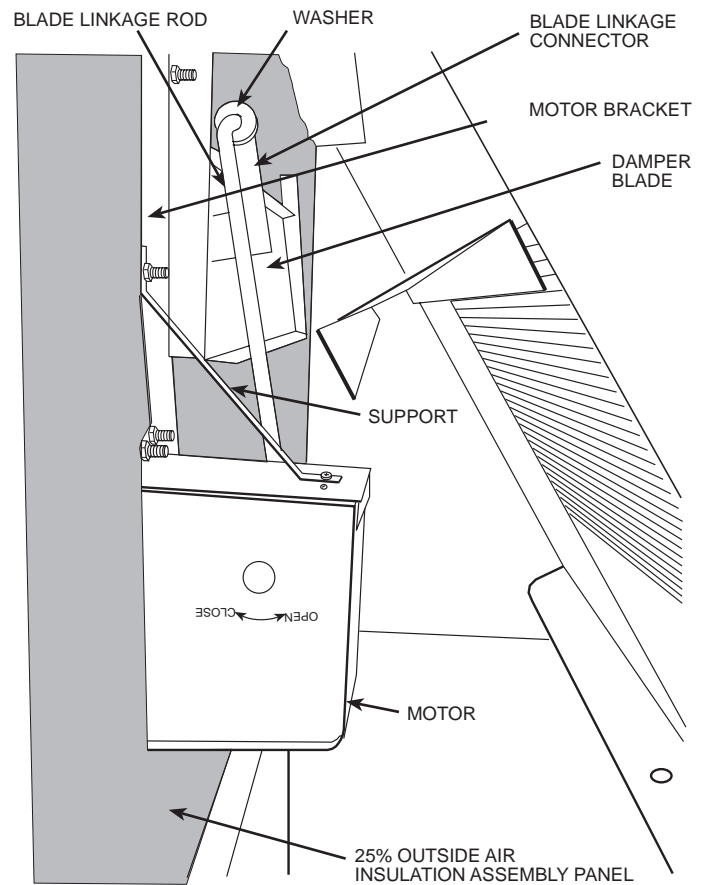


**Fig. 5 — Motor and Bracket Assembly**

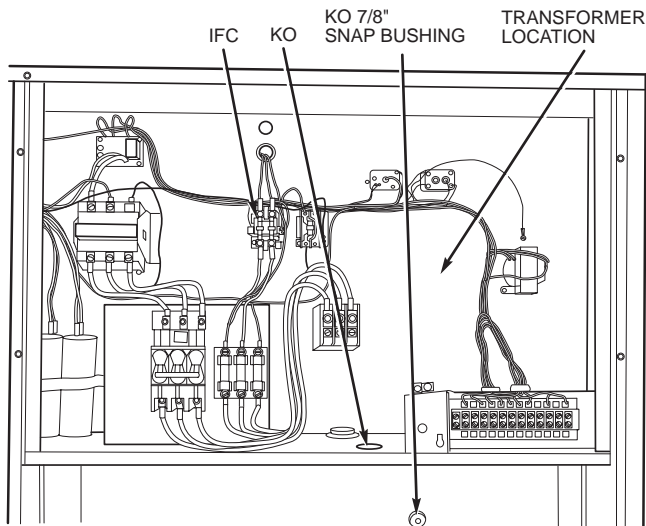


**Fig. 6 — Two-Position Damper Assembly Details**

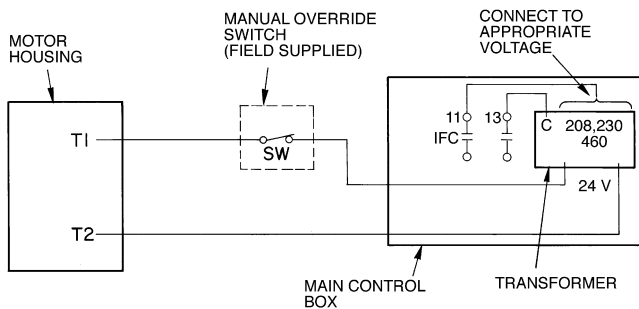
11. Connect two 104-in. long leads to 24 v on transformer secondary. Route these leads through knockouts in bottom of control box, insulation panel beneath control box (through snap bushings) and then through damper motor housing.
12. Connect leads from 24 v on transformer secondary to T1 and T2 of damper motor. See Fig. 8. (To override automatic opening of damper, a timer switch or manual switch can be field installed as indicated in Fig. 8.)
13. Replace control box access panel.
14. Check linkage for complete closing against insulation (Fig. 9). Adjust as necessary.
15. Reinstall 25% outside air insulation panel and economizer hood.



**Fig. 9 — Two-Position Damper Details**



**Fig. 7 — Typical Main Control Box**



**Fig. 8 — Schematic, Power Wiring**

---

**Manufacturer reserves the right to discontinue, or change at any time, specifications or designs without notice and without incurring obligations.**