



48/50PG03-14

Single-Package Rooftop Units Accessory Roof Curbs

Installation Instructions

Part Numbers: CRRFCURB020A00, CRRFCURB031A00,
CRRFCURB032A00, CRRFCURB033A00

PACKAGE USAGE

UNIT 48/50PG	PART NUMBER	NOMINAL HEIGHT (in.)
03-07	CRRFCURB020A00	14
	CRRFCURB032A00	24
08-14	CRRFCURB031A00	14
	CRRFCURB033A00	24

GENERAL

See Fig. 1 for roof curb details. Accessory roof curb packages may be used with accessory thru-the-curb service connections. These connections allow gas piping, power and control wiring to be routed through the curb to reduce the number of roof penetrations. Thru-the-curb accessories are shown below.

UNIT 48/50PG	PART NUMBER	NPT CONNECTION SIZE (in.)
03-07	CRGASSER005A00	1/2
08-14	CRGASSER005A00	3/4

PACKAGE CONTENTS

ITEM	QUANTITY
Curb Sides	2
Curb Ends	2
Long Supports	3
Short Support	1
Large Insulated Panels	2
Small Insulated Panels	2
Gasket Package	1

SAFETY CONSIDERATIONS

Installation and servicing of air-conditioning equipment can be hazardous due to system pressure and electrical components. Only trained and qualified service personnel should install, repair, or service air-conditioning equipment.

Untrained personnel can perform the basic maintenance functions of replacing filters. All other operations should be performed by trained service personnel. When working on air-conditioning equipment, observe precautions in the literature, tags and labels attached to the unit, and other safety precautions that may apply.

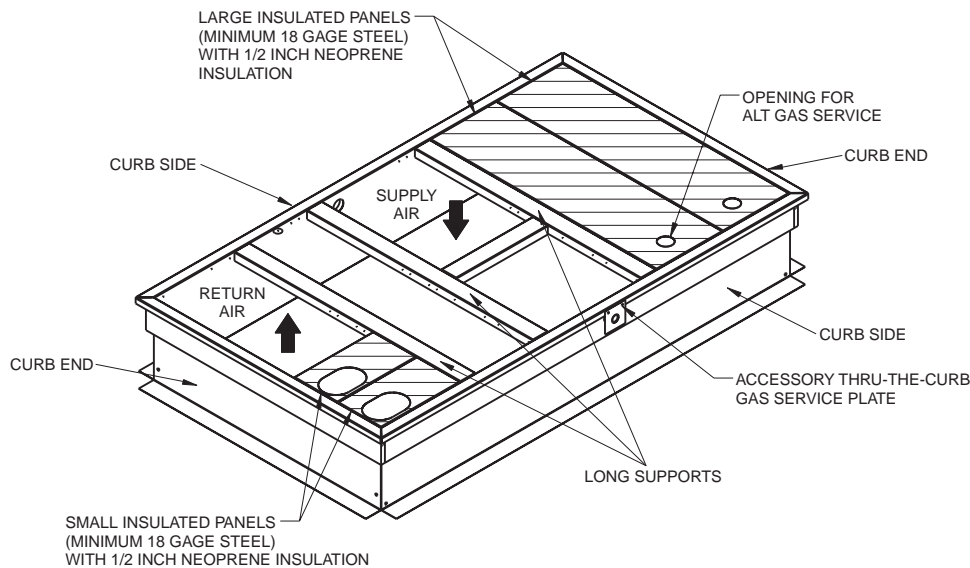


Fig. 1 — Roof Curb Details

Manufacturer reserves the right to discontinue, or change at any time, specifications or designs without notice and without incurring obligations.

INSTALLATION

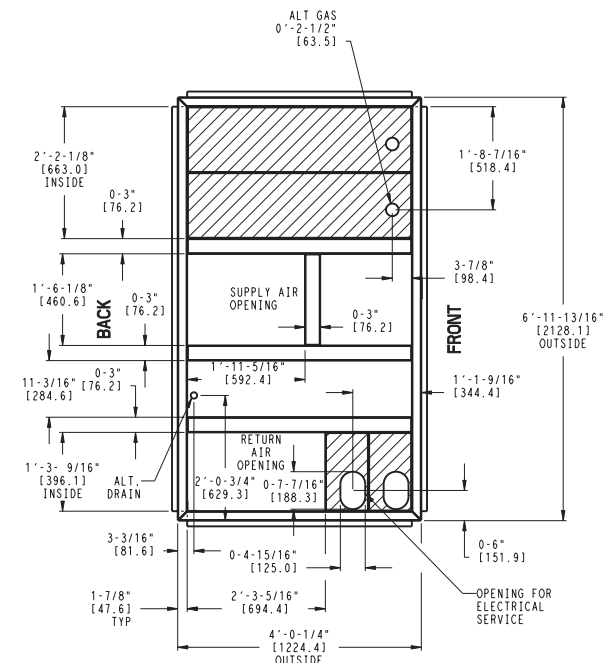
⚠ WARNING

To prevent injuries and rain damage, do not leave roof opening uncovered. If installation is not completed immediately after roof opening is cut and framed, provide an adequate temporary cover for the roof opening.

1. Before installing roof curb, ensure that curb is located so that proper clearances are maintained. Check unit nameplate or unit installation instructions for correct clearances.
2. Cut hole in roof for duct openings. See Fig. 2 and 3 for dimensions. It is not necessary to cut out the entire area of the roof curb. If utility connections are to be made through the curb, cut out the access space near the location of the utility plate connector.
3. Frame the roof opening to provide proper and adequate structural support.
4. Assemble the roof curb. Bring together a curb side and a curb end. Insert the tabs on curb end into the slots on the curb side. Press together until the pieces lock in place. It may be necessary to step on the top of the curb to lock the pieces in place.
5. Repeat for all four corners. If lifting the curb after assembly, hammer all corner tabs over to the side.
6. The curb is designed to allow for the insulated panels to be installed on either end of the curb. Install the 2 large insulated panels on the compressor end of the curb.
7. Install the 3 long supports. Refer to Fig. 2 and 3 for location.
8. Install the short support by sliding the slots into the 2 long supports installed in Step 7.
9. Install the 2 small insulated panels by sliding the tabs through the slots in the long support installed in Step 7.
10. Square up the roof curb and position over the duct openings cut in Step 2. Level the curb by placing shims (thin pieces of wood or metal) under the bottom flange of the curb. See Fig. 4 and 5 for unit leveling tolerances.

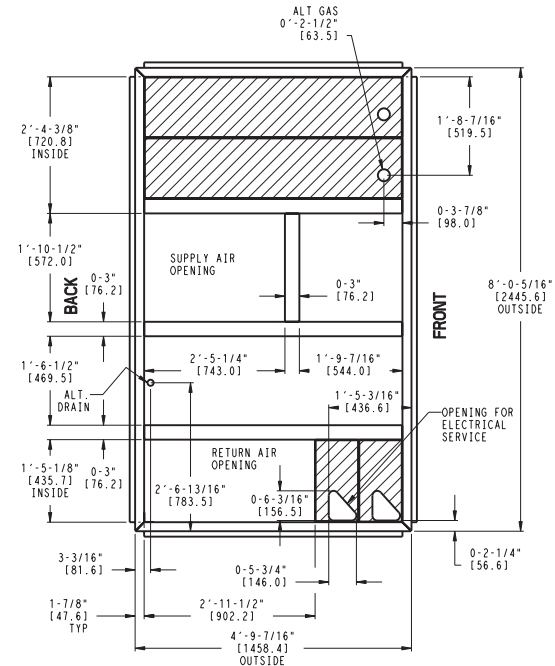
11. Secure curb in place by welding or screwing curb to the roof (field-supplied equipment required).
12. Attach ductwork to the curb. Ductwork **MUST** be installed before unit is placed on roof curb.
13. If the accessory thru-the-curb connection package is being used, it should be installed at this time.
14. Weatherproof the roof curb. See Fig. 6.
 - a. Insulate the outside the curb space between the roof material and the roof curb to prevent moisture from forming on the roof curb sides.
 - b. Insert the top edge of roofing and flashing material between wood nailer strip and roof curb flange. Nail material to wood nailer on roof curb as required.
15. Install sealing gasket on the top of the curb and duct supports. When installed, the weight of the unit will compress the gasket to seal the joint between the unit and the roof curb. Gasket strips must fit tightly together to leave no gaps for leakage.

IMPORTANT: Gasketing is critical for water integrity. Improperly installed gasketing can result in air leaks and poor unit performance.



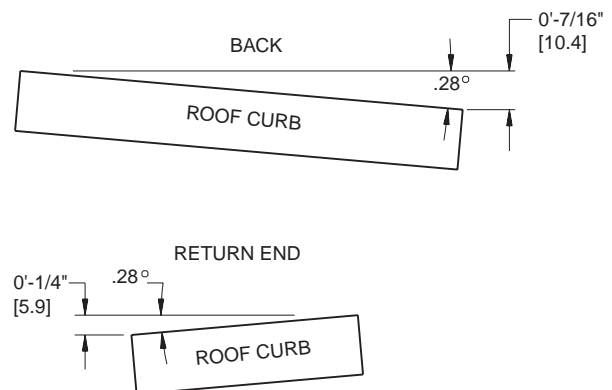
NOTE: Dimensions in [] are in mm.

Fig. 2 — Roof Curb Dimensions (48/50PG03-07)



NOTE: Dimensions in [] are in mm.

Fig. 3 — Roof Curb Dimensions (48/50PG08-14)

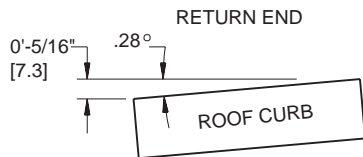
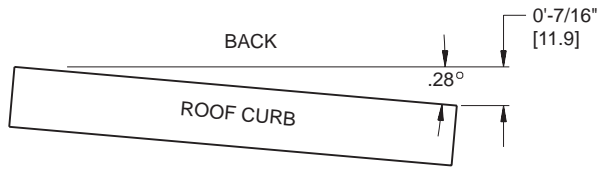


NOTE: Dimensions in [] are in mm.

Fig. 4 — Unit Leveling Tolerances (48/50PG03-07)

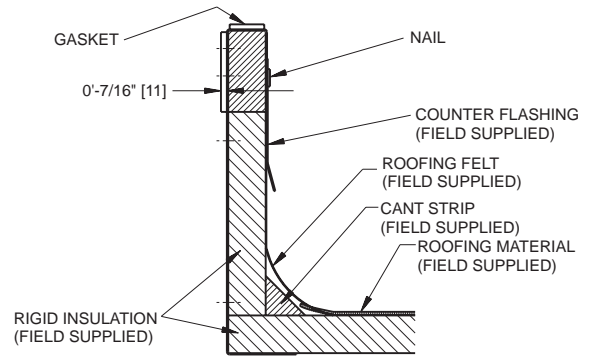
⚠ CAUTION

Do not slide unit to position it when it is sitting on the curb. Curb gasketing material may be damaged and leaks may result.



NOTE: Dimensions in [] are in mm.

Fig. 5 — Unit Leveling Tolerances (48/50PG08-14)



NOTE: Dimensions in [] are in mm.

Fig. 6 — Roof Curb Weather Proofing

