

Locking Control Door Accessory Kit For Use with Packaged Terminal Air Conditioner or Heat Pump

Installation Instructions

INTRODUCTION

These instructions cover the installation of the Locking Control Door Accessory Kit. See Fig. 1.

PACKAGE CONTENTS

ITEM	QUANTITY
Locking Control Door	1
Lock Strike Plate*	1
Keys (Identical)	2
Strike Plate Attachment Screw*	1

*Not required on some units.

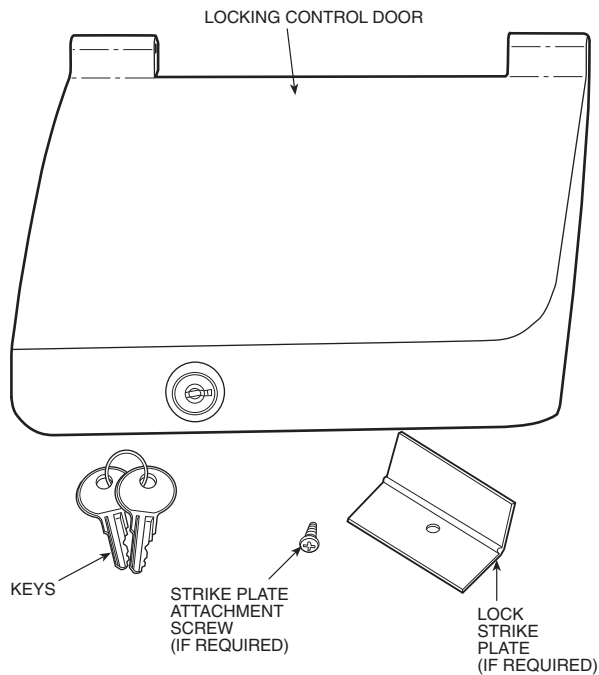


Fig. 1 — Locking Control Door Assembly

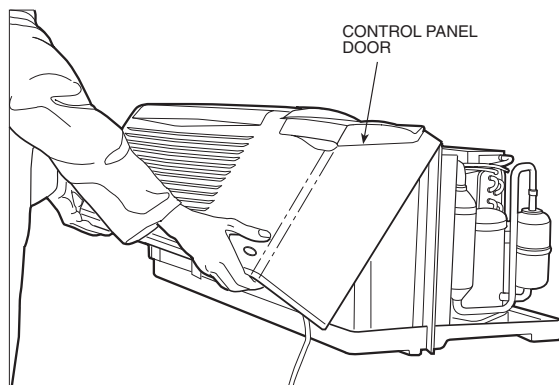


Fig. 2 — Removing Front Panel

INSTALLATION

Remove Front Panel — Remove front panel from the unit by grasping the panel firmly near the bottom of both sides, then pulling panel forward and upward to release magnetic latches and partition hooks. See Fig. 2.

Remove Existing Control Door

1. Turn over front panel.
2. From backside of front panel, remove 2 control door hinge pins and set aside. See Fig. 3.
3. Remove and discard door.

Attach Locking Control Door

1. Position new locking control door on front side of front panel where previous door was located.
2. Line up attachment hinge holes in locking control door with holes in front panel.
3. While holding door in place, re-attach 2 control door hinge pins into hinge pin holes on backside of front panel. See Fig. 3.

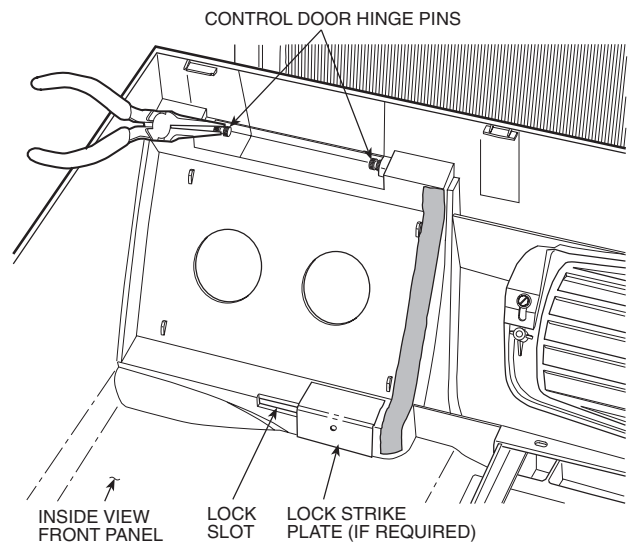


Fig. 3 — Removing Hinge Pins From Back of Front Panel

Manufacturer reserves the right to discontinue, or change at any time, specifications or designs without notice and without incurring obligations.

Attach Strike Plate (If Required)

1. If lock slot in plastic panel is 1-in. long, then the strike plate is not needed. If lock slot is approximately $2\frac{3}{8}$ -in. long, complete the steps below to attach the required strike plate.
2. From inside of front panel, line up strike plate with lock slot in front panel. See Fig. 3.
3. From top front of front panel, line up strike plate screw hole to left most position of slot.
4. Install attachment screw. *Do not over tighten.* See Fig. 4.

IMPORTANT: For best installation and proper lock operation, be sure strike plate attachment screw is installed in the left most position of the lock slot.

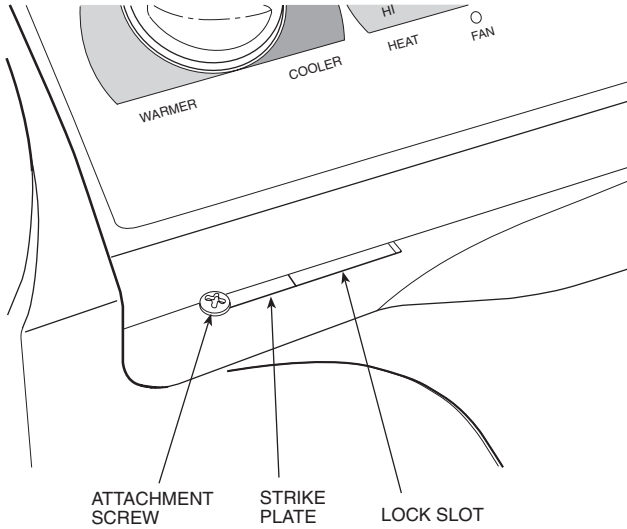


Fig. 4 — Location of Attachment Screw

Final Assembly and Operation

1. Reinstall front panel.
2. Close and lock door. See Fig. 5.
3. Be sure keys can easily be inserted and removed.
4. Verify door is secure.

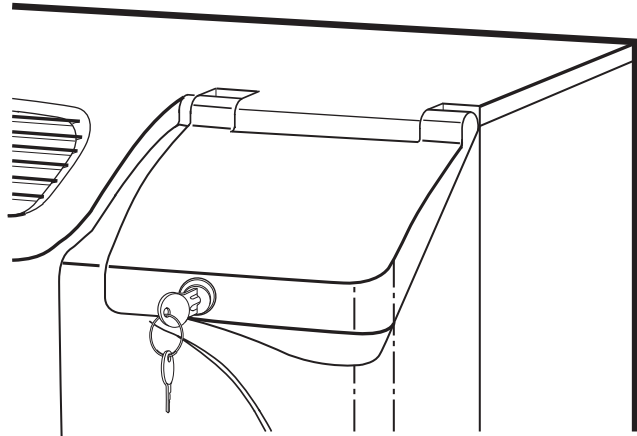


Fig. 5 — Completed Assembly