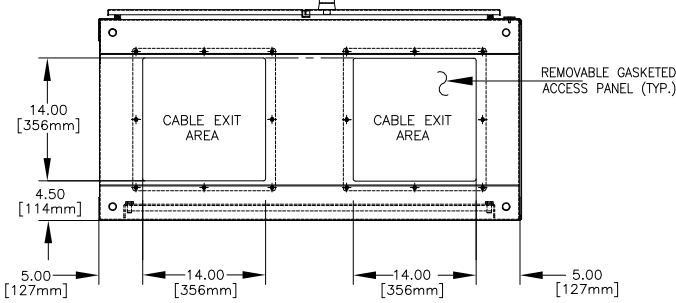
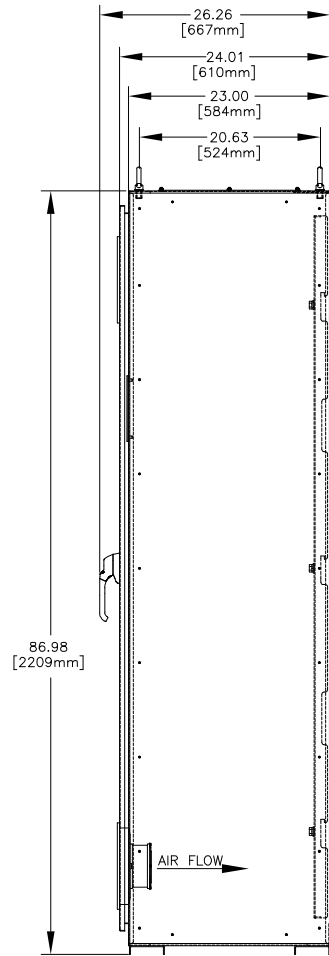
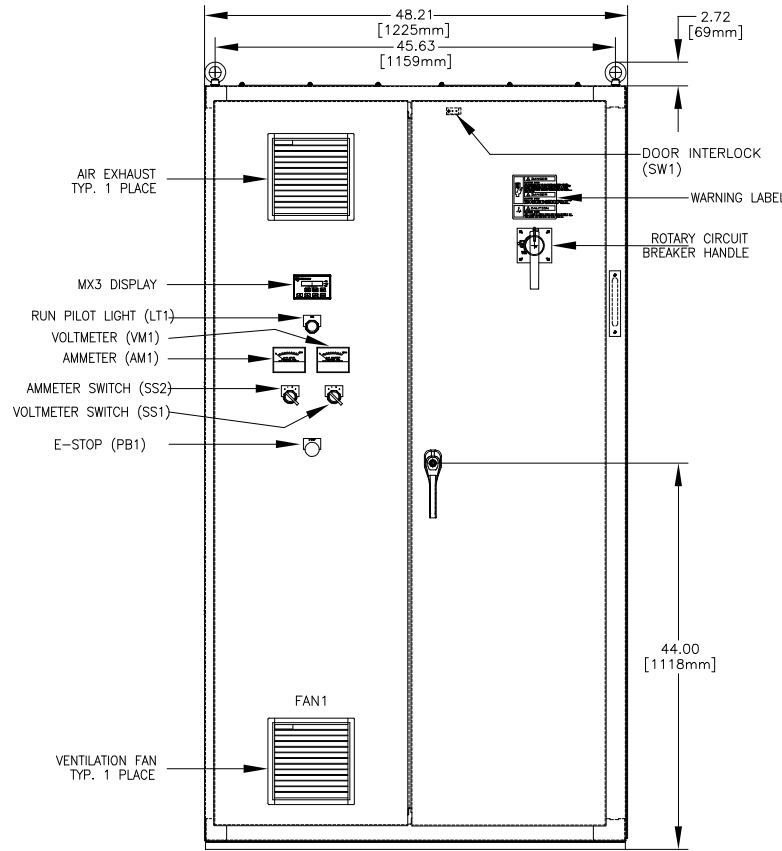
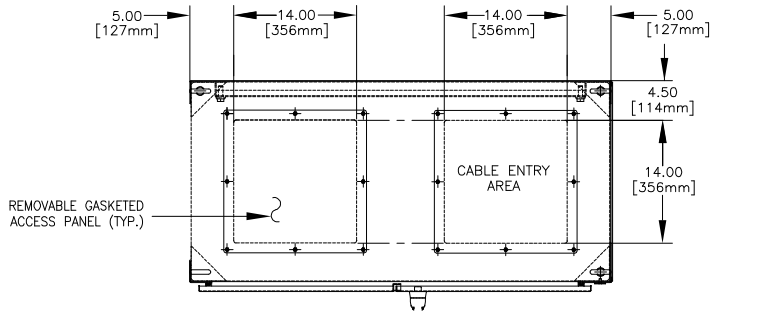


NOTES:

1. ALL DIMENSIONS ARE IN INCHES/MM UNLESS OTHERWISE NOTED.
2. MINIMUM WIRE BENDING SPACE SHALL BE 12" FROM TOP OF LUGS TO TOP OF ENCLOSURE.
3. MINIMUM WIRE BENDING SPACE SHALL BE 12" FROM BOTTOM OF LUG TO BOTTOM OF ENCLOSURE.
4. ENSURE THAT ALL RIBBON CABLES ARE ROUTED AWAY FROM POWER CONDUCTORS.
5. ENSURE LEFT DOOR IS HELD CLOSED BY RIGHT DOOR.
6. ENCLOSURE RATING=NEMA TYPE 1
7. APPROXIMATE WEIGHT= 500lbs. (BASE STARTER ONLY)
9. FREE STANDING FLOOR MOUNTED ENCLOSURE LAG BOLT TO CONCRETE FLOOR RECOMMENDED.
10. THIS UNIT IS CONFIGURED FOR TOP CABLE ENTRY / BOTTOM CABLE EXIT. \*BOTTOM CABLE ENTRY IS POSSIBLE IF PFCC OPTION IS NOT REQUIRED. FOR ALL OTHER CONFIGURATIONS CONSULT FACTORY FOR ENCLOSURE SIZING.



BENSHAW (WYE-DELTA)		
CIRCUIT BREAKER LUG CAPACITY (PER PHASE)		
STARTER RLA	# CONDUCTORS	CONDUCTOR RANGE
157-185	1	6AWG - 350MCM
186-444	2	3/0 - 500MCM
445-606	3	1/0 - 500MCM
607-775	4	250 - 500MCM

THIRD ANGLE PROJECTION  
UNLESS OTHERWISE SPECIFIED ALL DIMENSIONS IN INCHES INTERPRET DRAWING PER ASME Y14.5M-1994  
TOLERANCES: .XXX ± .02  
XXXX ± .005  
ANGLES ± 1°  
MATERIAL FINISH  
DRAWN: RM  
CHKD: MN  
ENG: MN  
DATE: 05/17/09  
03/18/09  
03/18/09

TITLE: ENCLOSURE LAYOUT  
CARRIER CORPORATION  
FREE STANDING  
157-775 RLA  
WYE-DELTA STARTER

**BENSHAW**  
480 E. CENTER RD. VALLEY SPRING, PA 17115  
SCALE: NONE  
SHEET X OF X

JOB NAME:  
job\_name

BUYER:  
buyer\_name

SALES ENG.:  
sales\_eng

MODEL NO.:  
model\_number

JOB NO.:  
job\_number

P.O. NO.:  
p.o.\_number

PREPARED BY:  
prepared\_by

ELECTRICAL CHARACTERISTICS:  
elect\_char.

JOBSITE LOCATION:  
job\_location 1  
job\_location 2

SALES OFFICE:  
sales\_office

REFRIGERANT NO.:  
refrig\_no

NOTES:  
notes\_1  
notes\_2

BENSHAW  
FREE STANDING  
STARTER (WYE-DELTA)  
(LOW VOLTAGE)  
RLA RANGE:157-775

DATE: \_date

REVISION: \_rev#

THIS DOCUMENT IS THE PROPERTY OF CARRIER CORP. AND IS DELIVERED UPON THE EXPRESS CONDITION THAT THE CONTENTS WILL NOT BE DISCLOSED OR USED WITHOUT CARRIER CORP. WRITTEN CONSENT.  
SUBMISSION OF THESE DWG'S. OR DOCUMENTS DOES NOT CONSTITUTE PART PERFORMANCE OR ACCEPTANCE OF CONTRACT.

CARRIER DWG# BN-157-775-FS-YD  
REV. = SHT 01 OF 01  
DATE: 6/12/2009  
SUPERSEDES DWG. DATED: -

CONTROLS / PIC II

19XR

SHT d1 OF d2