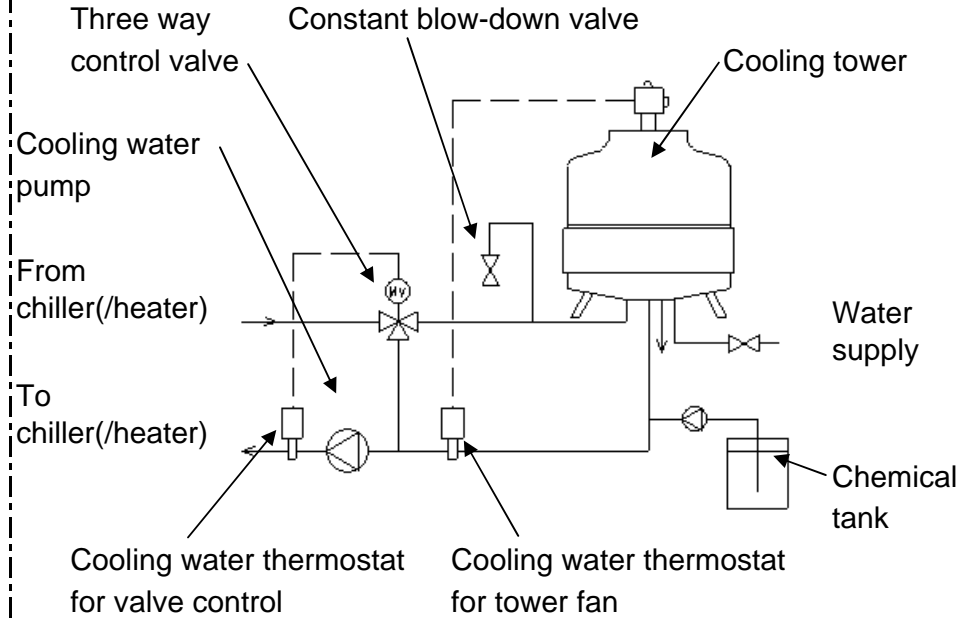
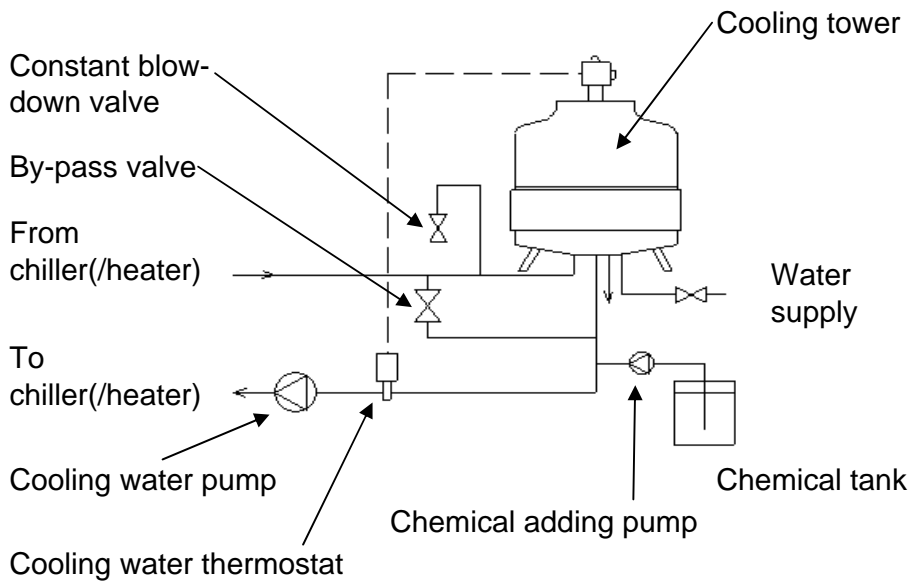


Absorption chiller(/heater) is designed to operate with a cooling water entering temperature above $18^{\circ}\text{C}(64.4^{\circ}\text{F})$. In typical applications, the chiller(/heater) is selected on the basis of the cooling water temperature available at full load. This is $29.4^{\circ}\text{C}(85^{\circ}\text{F})$. During operation of the chiller(/heater) keep the cooling water entering temperature between $29.4^{\circ}\text{C}(85^{\circ}\text{F})$ and $18^{\circ}\text{C}(64.4^{\circ}\text{F})$. During start-up however, a low temperature is allowable until the operating conditions are reached.

Note:

- 1) Be sure to start and stop the fan by means of the cooling water thermostat.
- 2) Provide a bypass valve in order to control the cooling water entering temperature properly.

If the chiller(/heater) operates during intermediate season or in winter, provide an automatic three-way control valve shown as below.



Carrier
SANYO

Cooling water temperature control

Model

All model

Drawing code

CM-014-018-00-0