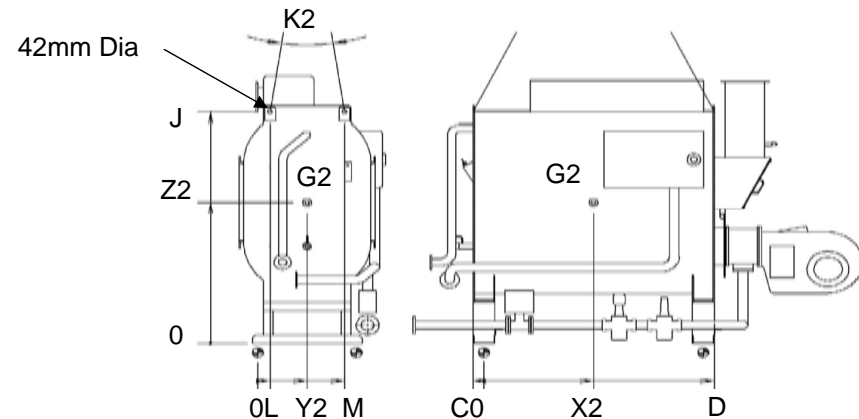
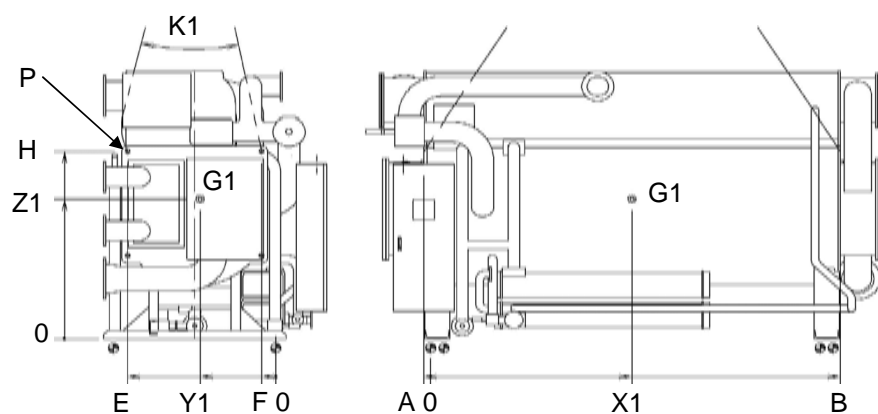
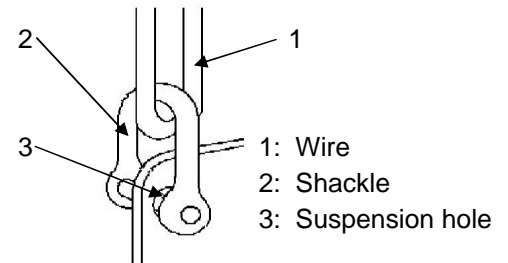


TSA-16	Main shell								HT generator							
	Suspension hole location					Center of gravity "G1"			Suspension hole location					Center of gravity "G2"		
	A	B	E	F	H	X1	Y1	Z1	C	D	L	M	J	X2	Y2	Z2
DJ-61	90	4,558	1,615	185	2,353	2,234	950	1,667	160	2,540	110	890	2,910	1,200	500	1,795
DJ-62	90	5,056	1,615	185	2,353	2,483	850	1,689	160	2,840	110	890	2,910	1,350	500	1,795
DJ-63	90	5,581	1,615	185	2,353	2,746	850	1,690	160	3,140	110	890	2,910	1,500	500	1,795
DJ-71	290	4,856	1,990	210	2,310	2,283	1,023	1,732	160	3,240	142	1,058	3,058	1,550	600	1,752
DJ-72	290	5,381	1,990	210	2,310	2,546	1,026	1,736	160	3,540	142	1,058	3,058	1,700	600	1,752
DJ-73	290	5,881	1,990	210	2,310	2,796	1,028	1,737	160	3,840	142	1,058	3,058	1,850	600	1,752
DJ-81	290	5,381	2,170	230	2,410	2,546	1,128	1,843	160	3,840	200	1,200	3,218	1,850	700	1,818
DJ-82	290	5,881	2,170	230	2,410	2,796	1,131	1,845	160	4,040	200	1,200	3,218	1,950	700	1,818



- Note) 1) Inserts the shackle bar into the suspension hole and attach the shackle with the wire to the shackle bar. The wire angle (K1,K2) should be 90 degree. Be sure to lift at all four machine points and never just at 2 point.
Suspension hole(P) diameter : 50mm(DJ-61,62,63), 60mm(DJ-71,72,73), 72mm(DJ-81,82)
- 2) Move the hook of crane to the machine, and hang the two wires on the hook.
- 3) Move the machine carefully. Avoid shocks and do not drop the machine.
- 4) The machine is a vacuum vessel and includes solutions.
Any damage caused may be irreparable.



Carrier
SANYO

Lifting data

Model

TSA-16DJ

Drawing code

DJ-008-132-21-0