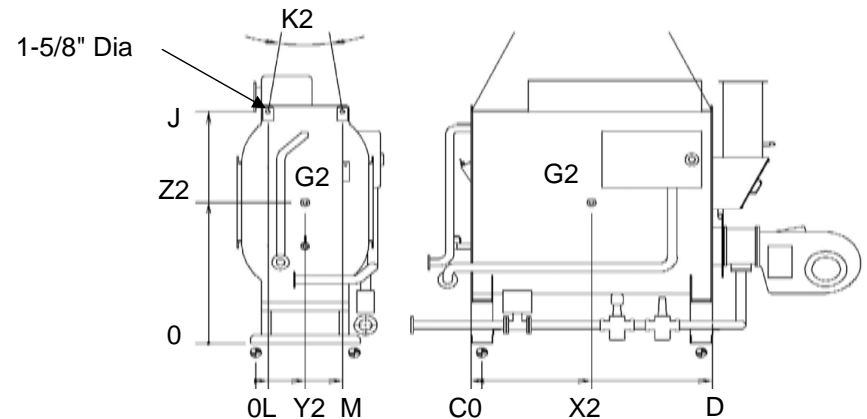
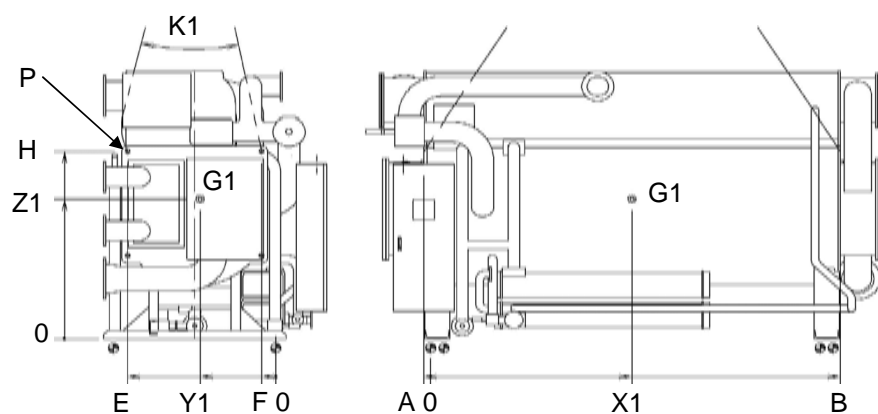
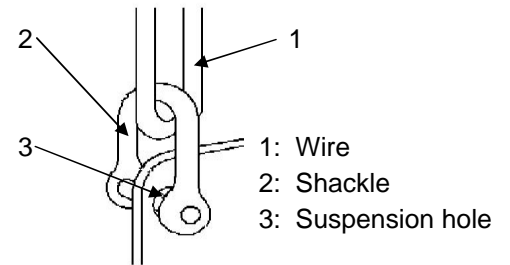


TSA-16	Main shell								HT generator							
	Suspension hole location					Center of gravity "G1"			Suspension hole location					Center of gravity "G2"		
	A	B	E	F	H	X1	Y1	Z1	C	D	L	M	J	X2	Y2	Z2
DJ-61	3-1/2	179-1/2	63-5/8	7-1/4	92-5/8	8-3/4	37-3/8	65-5/8	6-1/4	100	4-3/8	35	114-5/8	47-1/4	19-5/8	70-5/8
DJ-62	3-1/2	199	63-5/8	7-1/4	92-5/8	97-3/4	33-1/2	66-1/2	6-1/4	111-3/4	4-3/8	35	114-5/8	53-1/8	19-5/8	70-5/8
DJ-63	3-1/2	219-3/4	63-5/8	7-1/4	92-5/8	108-1/8	33-1/2	66-1/2	6-1/4	123-5/8	4-3/8	35	114-5/8	59	19-5/8	70-5/8
DJ-71	11-3/8	191-1/8	78-3/8	8-1/4	91	89-7/8	40-1/4	68-1/4	6-1/4	127-1/2	5-5/8	41-5/8	120-3/8	61	19-5/8	69
DJ-72	11-3/8	211-7/8	78-3/8	8-1/4	91	100-1/4	40-3/8	68-3/8	6-1/4	139-3/8	5-5/8	41-5/8	120-3/8	66-7/8	19-5/8	69
DJ-73	11-3/8	231-1/2	78-3/8	8-1/4	91	110-1/8	40-1/2	68-3/8	6-1/4	151-1/8	5-5/8	41-5/8	120-3/8	72-7/8	19-5/8	69
DJ-81	11-3/8	211-7/8	85-3/8	9	94-7/8	100-1/4	44-3/8	72-1/2	6-1/4	151-1/8	7-3/4	47-1/4	126-3/4	72-7/8	27-1/2	71-5/8
DJ-82	11-3/8	231-1/2	85-3/8	9	94-7/8	110-1/8	44-1/2	72-5/8	6-1/4	159	7-3/4	47-1/4	126-3/4	76-3/4	27-1/2	71-5/8



- Note) 1) Inserts the shackle bar into the suspension hole and attach the shackle with the wire to the shackle bar. The wire angle (K1,K2) should be 90 degree. Be sure to lift at all four machine points and never just at 2 point. Suspension hole(P) diameter : 2" (DJ-61,62,63), 2-3/8" (DJ-71,72,73), 2-7/8" (DJ-81,82)
- 2) Move the hook of crane to the machine, and hang the two wires on the hook.
- 3) Move the machine carefully. Avoid shocks and do not drop the machine.
- 4) The machine is a vacuum vessel and includes solutions. Any damage caused may be irreparable.



**Carrier**  
**SANYO**

## Lifting data

Model

**TSA-16DJ**

Drawing code

**DJ-008-132-26-0**