

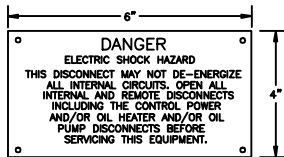
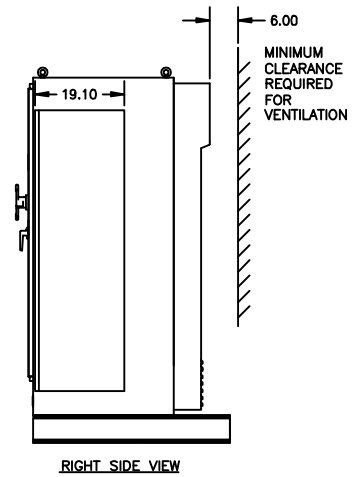
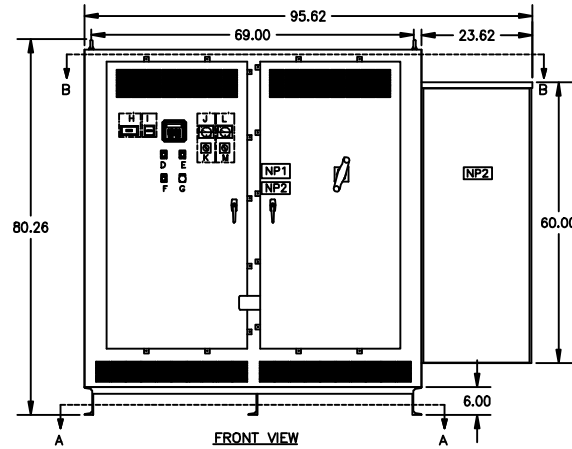
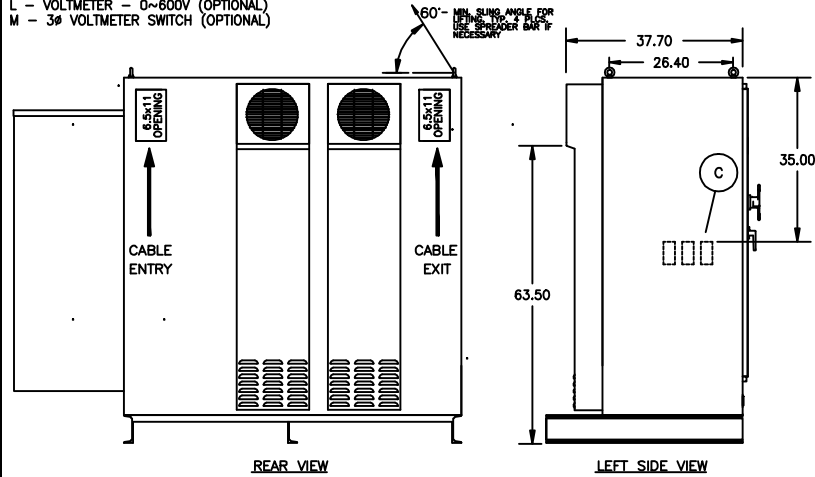
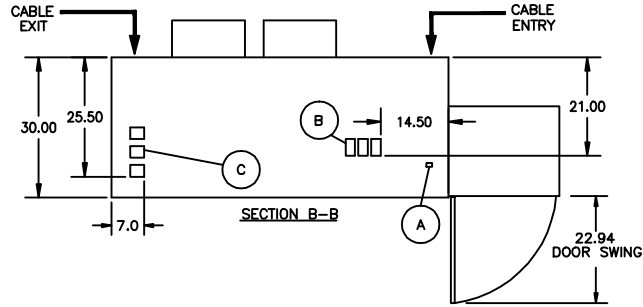
**LEGEND**

- A - GROUND LUG (1/0 ~ 350MCM)
- B - INPUT TERMINATIONS (REAR ENTRY)  
3 x (3/0 ~ 500MCM) PER Ø (600KVA)  
4 x (3/0 ~ 500MCM) PER Ø (700~1000KVA)  
(75°C TYPES RHW, THHW, THW, THWN, XHHW)
- C - OUTPUT TERMINATIONS (REAR ENTRY)  
4 x (1/0 ~ 750MCM) PER Ø  
(75°C TYPES RHW, THHW, THW, THWN, XHHW)
- D - GREEN PILOT LIGHT - "POWER ON"
- E - RED PILOT LIGHT - "RUN"
- F - AMBER PILOT LIGHT - "FAULT"
- G - PUSHBUTTON - "EMERGENCY STOP"
- H - START COUNTER (OPTIONAL)
- I - ELAPSED TIME METER (OPTIONAL)
- J - AMMETER - 0~XXXX (OPTIONAL)
- K - 3Ø AMMETER SWITCH (OPTIONAL)
- L - VOLTMETER - 0~500V (OPTIONAL)
- M - 3Ø VOLTMETER SWITCH (OPTIONAL)

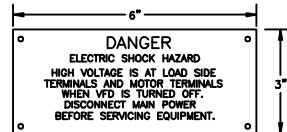
**NOTES**

- DIMENSIONS ARE IN INCHES.
- DIMENSIONS FOR REFERENCE ONLY.
- WEIGHT: APPROX. 2350lbs (1068kg)
- COLOR: GRAY
- INPUT/OUTPUT TERMINATION BENDING SPACE IN ACCORDANCE WITH NEC TABLE 373-6(b)

CIRCUIT BREAKER RATING			
RLA	CB AMPS	AIC@480V	
669	800	65KA	
780	1000	65KA	
907	1000	65KA	
103B	1200	100kA	
1114	1200	100kA	

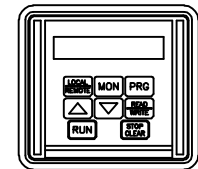
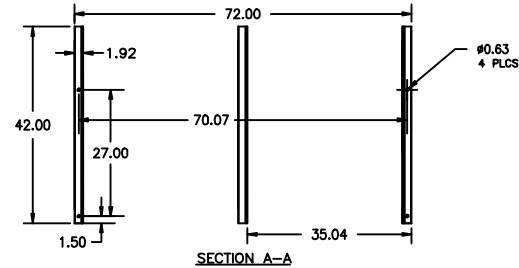


NAMEPLATE 1



NAMEPLATE 2

NOTE: NAMEPLATES TO BE RED WITH WHITE LETTERS. FIRST LINE TO BE 3/8". ALL OTHER LINES TO BE 3/16".



G3 KEYPAD DETAILED VIEW

4						
3						
2						
1						
0						
REV	DATE	DESCRIPTION	BY	CHK	APPR	

**TOSHIBA INTERNATIONAL CORPORATION**  
MADE IN HOUSTON, TEXAS U.S.A.  
THIS MATERIAL IS THE EXCLUSIVE PROPERTY OF TOSHIBA INTERNATIONAL CORPORATION AND SHALL NOT BE REPRODUCED, USED, OR DISCLOSED TO OTHERS UNLESS PRIOR WRITTEN AUTHORIZATION IS OBTAINED.

TITLE:  
ENCL OUTLINE, REAR UPPER ENTRY/EXIT  
578~1114RLA G3+A

CUSTOMER: PROJECT NUMBER:

REVISION: 2 SCALE: 1.0=26.0

PRESALE SUBMITTAL

DRAWING NUMBER:  
PS I808GN31