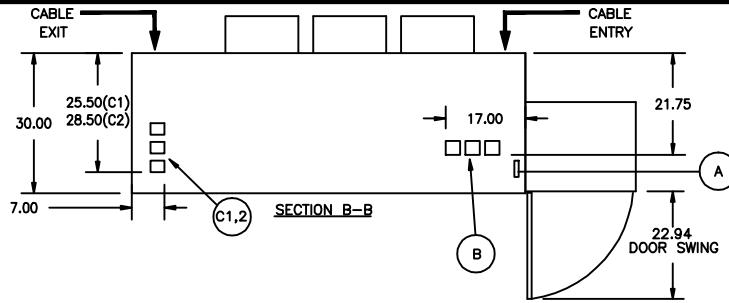


LEGEND

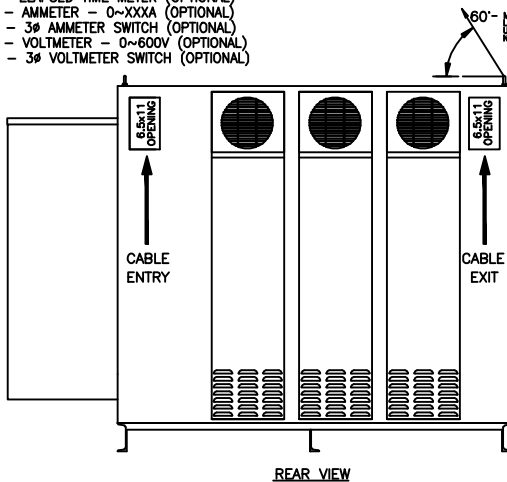
- A - GROUND LUG (1/0~350MCM)
- B - INPUT TERMINATIONS (REAR ENTRY)
4 x (1/0 ~ 750MCM) PER Ø
(75°C TYPES RHW, THHW, THW, THWN, XHHW)
- C - OUTPUT TERMINATIONS (REAR EXIT)
C1 - 4 x (1/0 ~ 750MCM) PER Ø (1200kVA)
C2 - 6 x (1/0 ~ 750MCM) PER Ø (14~1500kVA)
(75°C TYPES RHW, THHW, THW, THWN, XHHW)
- D - GREEN PILOT LIGHT "POWER ON"
- E - RED PILOT LIGHT "RUN"
- F - AMBER PILOT LIGHT "FAULT"
- G - PUSHBUTTON - "EMERGENCY STOP"
- H - START COUNTER (OPTIONAL)
- I - ELAPSED TIME METER (OPTIONAL)
- J - AMMETER - 0~XXXX (OPTIONAL)
- K - 3Ø AMMETER SWITCH (OPTIONAL)
- L - VOLTMETER - 0~600V (OPTIONAL)
- M - 3Ø VOLTMETER SWITCH (OPTIONAL)

NOTES

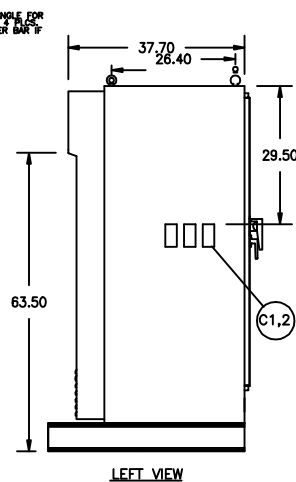
- DIMENSIONS ARE IN INCHES.
- DIMENSIONS FOR REFERENCE ONLY.
- WEIGHT: APPROX. 3850lbs (1750kg)
- COLOR: GRAY
- INPUT/OUTPUT TERMINATION BENDING SPACE IN ACCORDANCE WITH NEC TABLE 373-6(b)



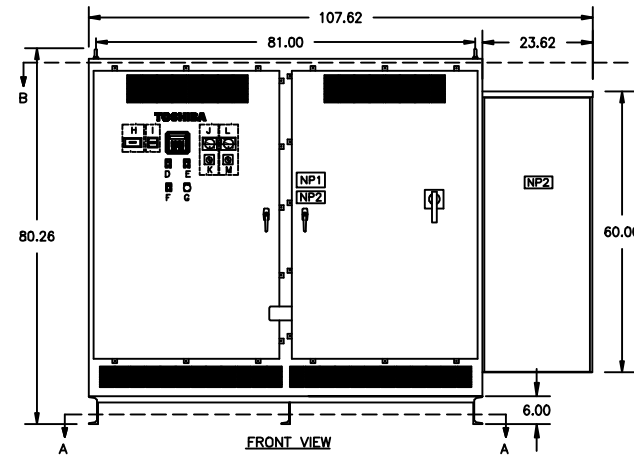
CIRCUIT BREAKER RATING		
RLA	CB AMPS	AIC@480V
1336	1600	65kA
1559	1800	65kA
1670	1800	65kA



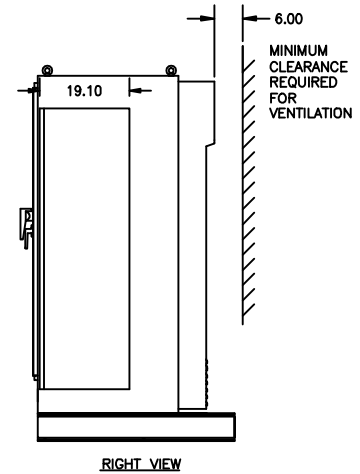
REAR VIEW



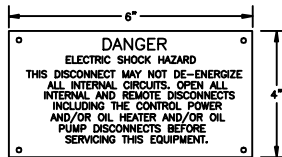
LEFT VIEW



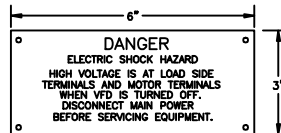
FRONT VIEW



RIGHT VIEW

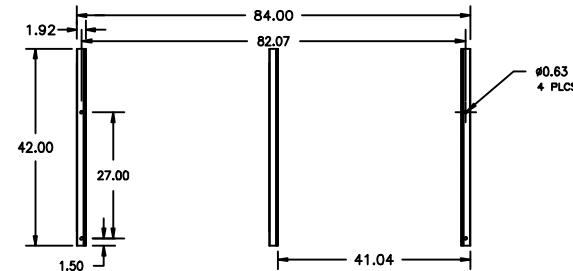


NAMEPLATE 1

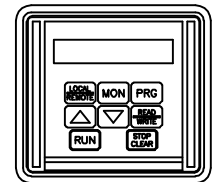


NAMEPLATE 2

NOTE: NAMEPLATES TO BE RED WITH WHITE LETTERS. FIRST LINE TO BE 3/8". ALL OTHER LINES TO BE 3/16".



SECTION A-A



G3 KEYPAD DETAILED VIEW

REV	DATE	DESCRIPTION	BY	CHK	APPR
4					
3					
2					
1					
0					

TOSHIBA
 TOSHIBA INTERNATIONAL CORPORATION
 MADE IN HOUSTON, TEXAS U.S.A.
 THIS MATERIAL IS THE EXCLUSIVE PROPERTY OF TOSHIBA INTERNATIONAL CORPORATION AND SHALL NOT BE REPRODUCED, USED, OR DISCLOSED TO OTHERS UNLESS PRIOR WRITTEN AUTHORIZATION IS OBTAINED.

TITLE: ENCL OUTLINE, REAR UPPER ENTRY/EXIT
 1115~1670RLA G3+A
 CUSTOMER: PROJECT NUMBER:

REVISION: 2 SCALE: 1.0=26.0
 PRESALE SUBMITTAL
 DRAWING NUMBER: PS 1808GP31