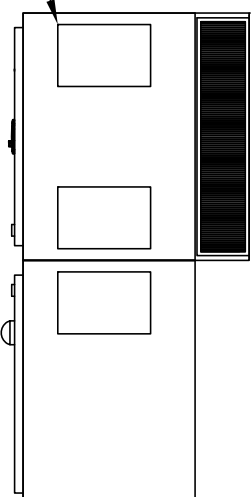


LEGEND

- A - GROUND LUG, TOP/BOTTOM ENTRY (1/0 ~ 350MCM)
- B - INPUT TERMINATIONS, TOP ENTRY
2 x (3/0 ~ 500MCM) PER Ø
(75°C TYPES RHW, THW, THW, THWN, XHHW)
- C - OUTPUT TERMINATIONS, BOTTOM ENTRY
4 x (1/0 ~ 500MCM) PER Ø
(75°C TYPES RHW, THHW, THW, THWN, XHHW)
- D - GREEN PILOT LIGHT - "POWER ON"
- E - RED PILOT LIGHT - "RUN"
- F - AMBER PILOT LIGHT - "FAULT"
- G - PUSHBUTTON - "EMERGENCY STOP"
- H - START COUNTER
- I - ELAPSED TIME METER (OPTIONAL)
- J - AMMETER - 0~XXXX (OPTIONAL)
- K - 3Ø AMMETER SWITCH (OPTIONAL)
- L - VOLTMETER - 0~600V (OPTIONAL)
- M - 3Ø VOLTMETER SWITCH (OPTIONAL)

VFD SPEC	CIRCUIT BREAKER RATING
KVA RLA RANGE	CB AMPS AIC@600V
500 382~445	600 65KA
625 446~556	800 65KA
725 557~646	1000 65KA
800 647~713	1000 65KA

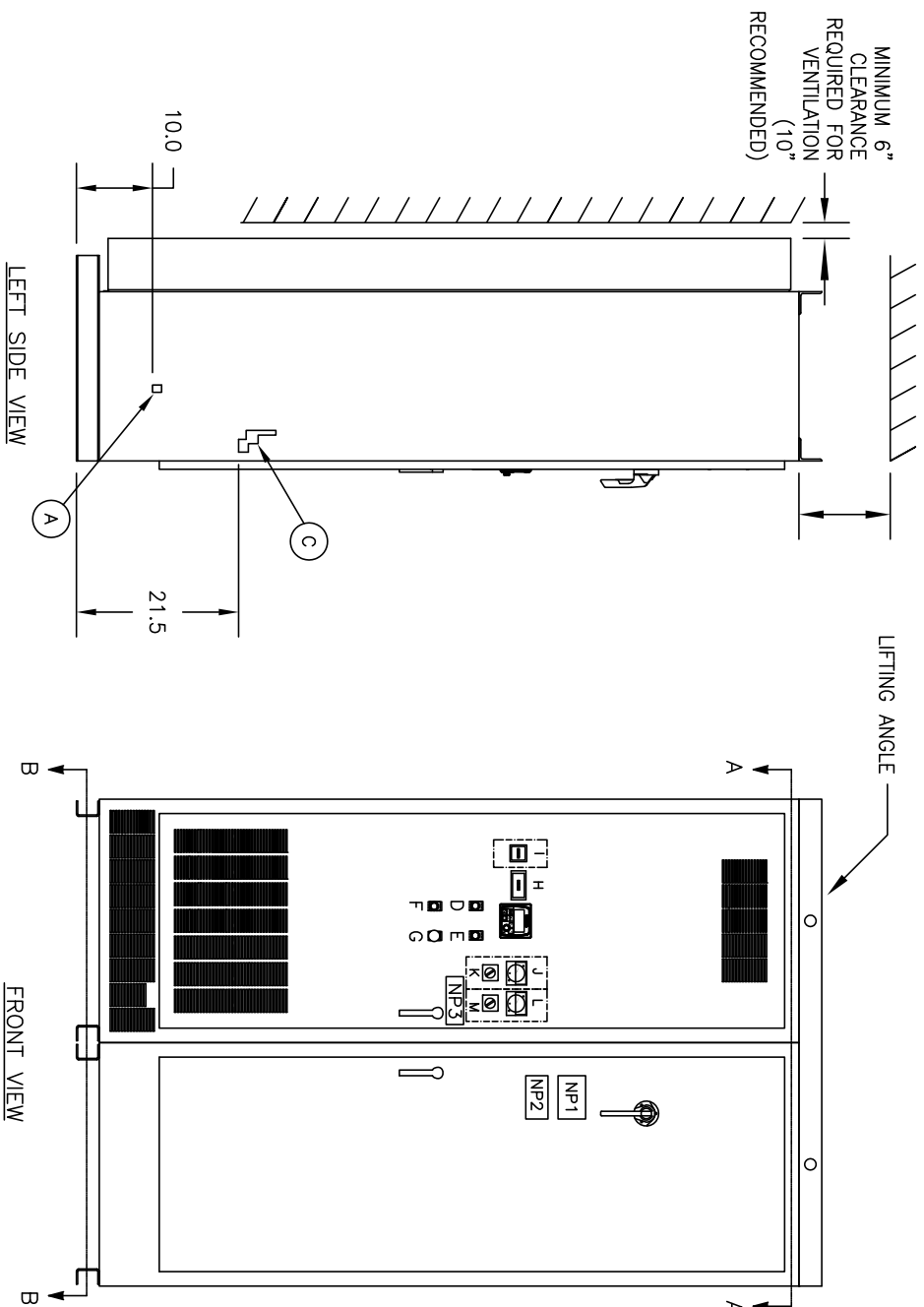
8.0" X 12.0" TOP OPENING (TYP. - 3)



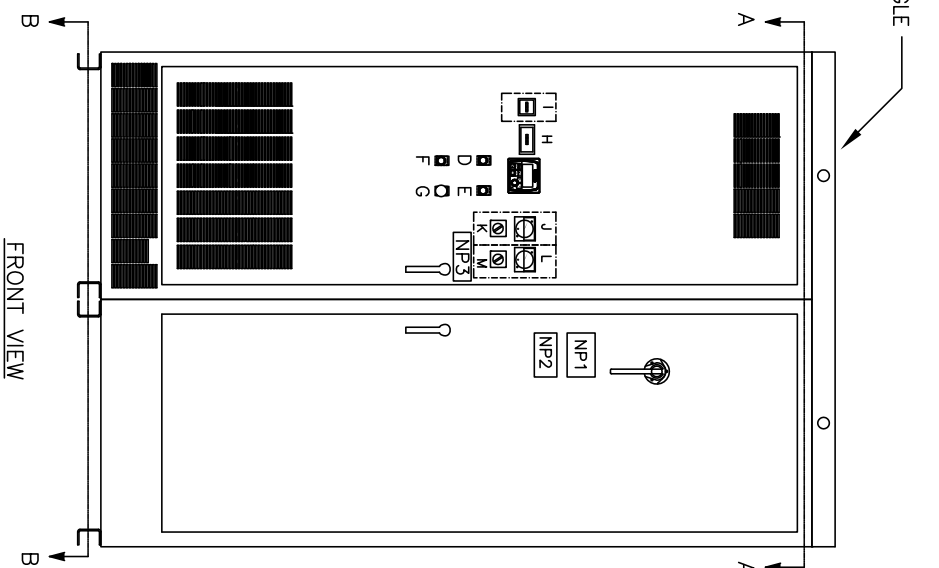
TOP VIEW

MINIMUM 12" CLEARANCE REQUIRED FOR VENTILATION

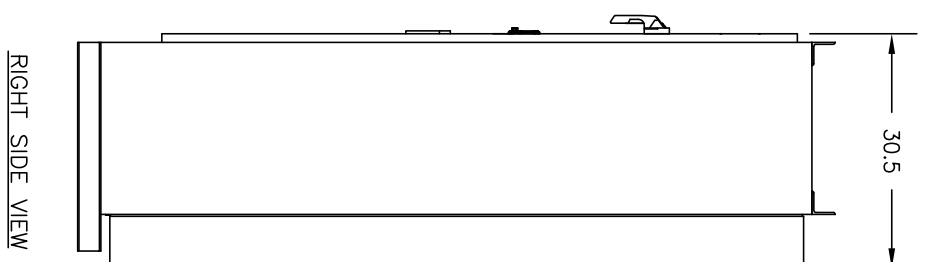
MINIMUM 6" CLEARANCE REQUIRED FOR VENTILATION (10" RECOMMENDED)



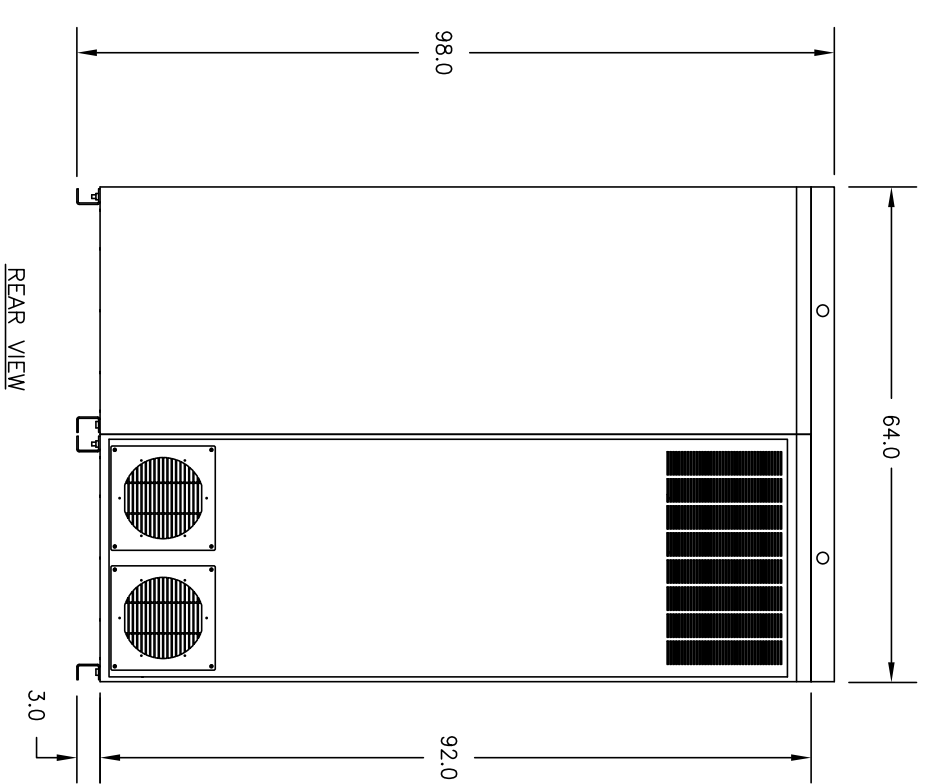
LEFT SIDE VIEW



FRONT VIEW

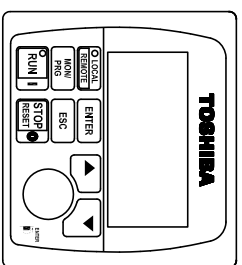


RIGHT SIDE VIEW



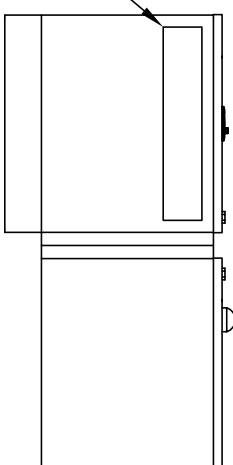
REAR VIEW

- NOTES**
- DIMENSIONS ARE IN INCHES.
 - DIMENSIONS FOR REFERENCE ONLY.
 - WEIGHT: APPROX. 2000lbs (909kg)
 - COLOR: GRAY
 - INPUT/OUTPUT TERMINATION BENDING SPACE IN ACCORDANCE WITH NEC TABLE 312-6(B)
 - BOTTOM ENTRY IS OPTIONAL, CONSULT FACTORY FOR DETAILS.

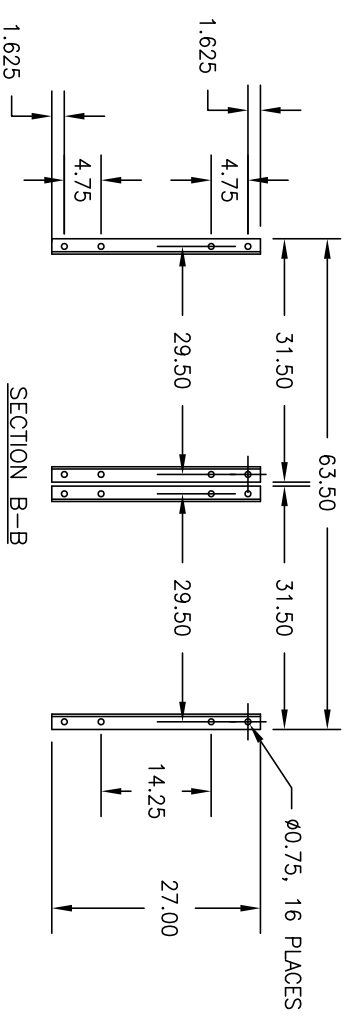


KEYPAD DETAILED VIEW

25.0" X 5.0" BOTTOM OPENING



BOTTOM VIEW



SECTION B-B

REV	DATE	DESCRIPTION	BY	CHK	APPR
4					
3					
2					
1					
0	06/24/09	FIRST ISSUE	JH		

TOSHIBA
TOSHIBA INTERNATIONAL CORPORATION
MADE IN HOUSTON, TEXAS U.S.A.

THIS MATERIAL IS THE EXCLUSIVE PROPERTY OF TOSHIBA INTERNATIONAL CORPORATION AND SHALL NOT BE REPRODUCED, USED, OR DISCLOSED TO OTHERS UNLESS PRIOR WRITTEN AUTHORIZATION IS OBTAINED.

TITLE: ENCLOSURE OUTLINE - 382~713RLA
CUSTOMER: 500~800KVA, GX7 600VAC
PROJECT NUMBER:

REVISION: 0 SCALE: 1.0=26.0
DRAWING NUMBER: 1808N731